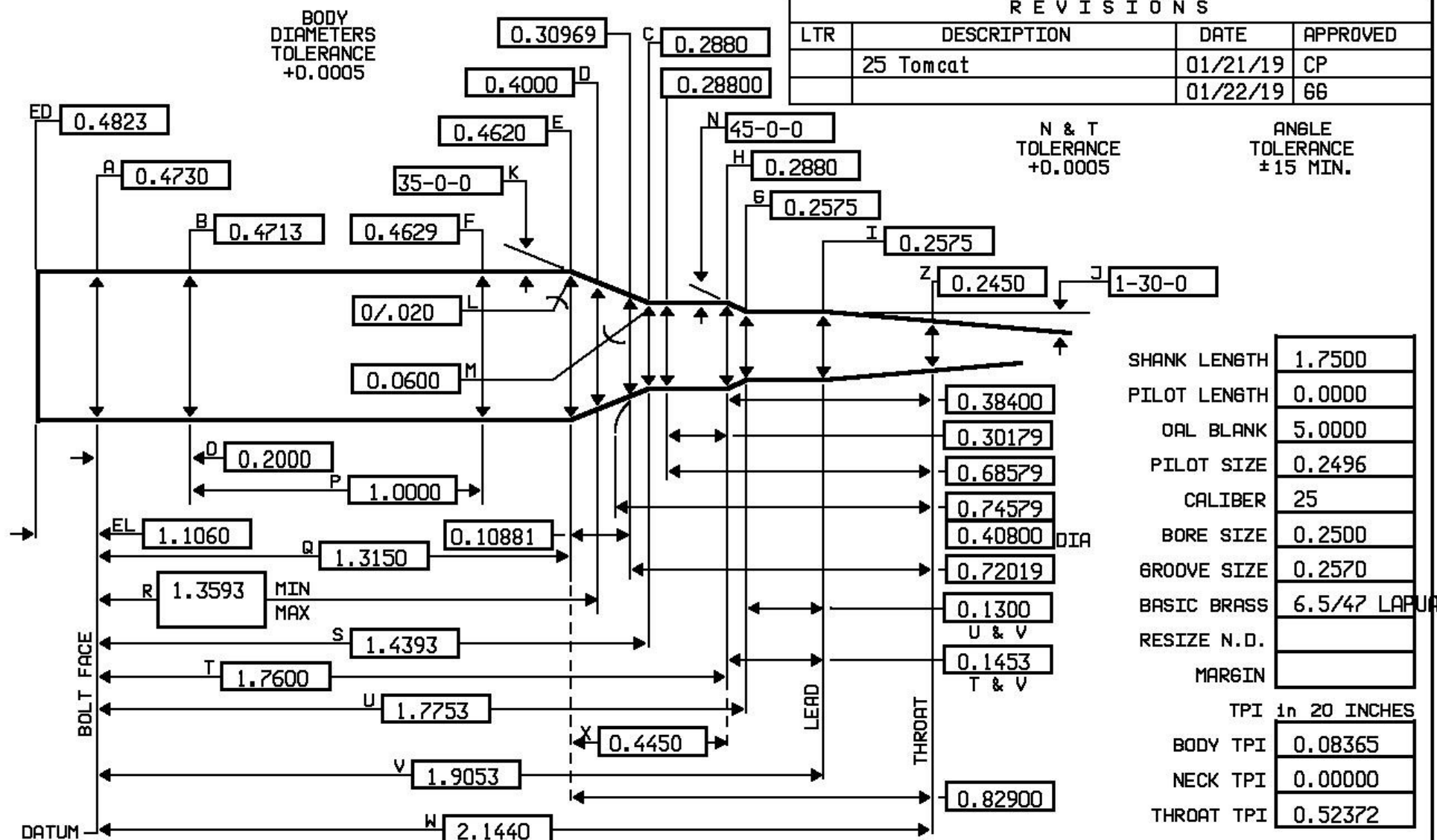


Tool ID: J6S: 541-267-4331

25 TOMCAT

BODY
DIAMETERS
TOLERANCE
+0.0005

SHANK LENGTH	1.7500
PILOT LENGTH	0.0000
OAL BLANK	5.0000
PILOT SIZE	0.2496
CALIBER	25
BORE SIZE	0.2500
GROOVE SIZE	0.2570
BASIC BRASS	6.5/47 LAPUA
RESIZE N.D.	
MARGIN	
TPI in 20 INCHES	
BODY TPI	0.08365
NECK TPI	0.00000
THROAT TPI	0.52372

DESIGNER

NAME Jason Tomlinson

PHONE () _____

LENGTHS
TOLERANCE
+0.0050

J6S
COOS BAY, OR USA
97420

SIZE
A

DWN.

DATE 01/22/19

RIMLESS OR REBATED RIFLE
MINIMUM CHAMBER

SCALE NONE

PRINT # 25 TOMCAT

COMMENT: Special headspace gauges required.