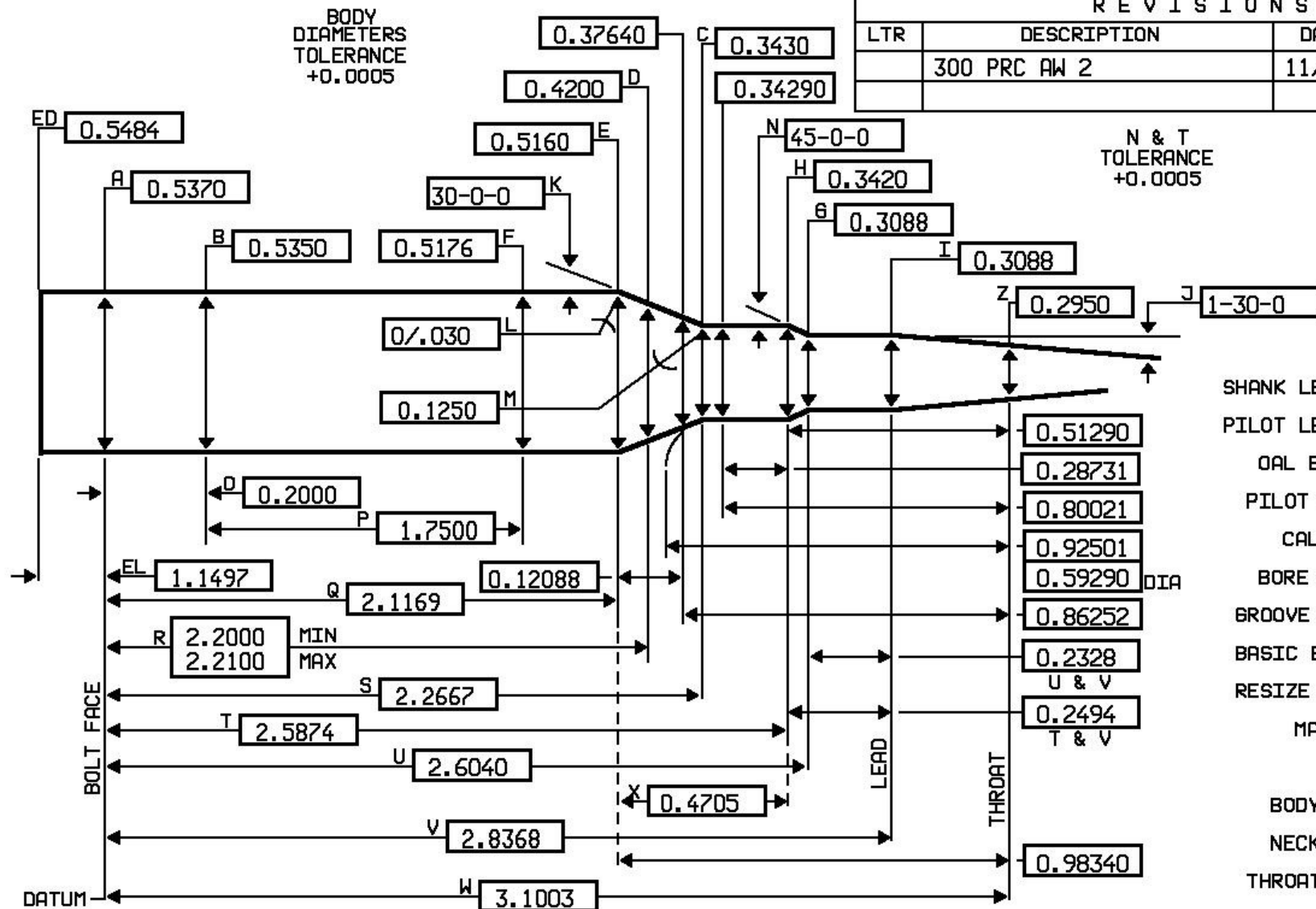


BODY
DIAMETERS
TOLERANCE
+0.0005



R E V I S I O N S

LTR	DESCRIPTION	DATE	APPROVED
	300 PRC AW 2	11/23/20	NM

N & T
TOLERANCE
+0.0005

ANGLE
TOLERANCE
±15 MIN

SHANK LENGTH	1.7500
PILOT LENGTH	0.0000
OAL BLANK	6.0000
PILOT SIZE	0.2996
CALIBER	30
BORE SIZE	0.3000
GROOVE SIZE	0.3080
BASIC BRASS	300 PRC
RESIZE N.D.	0.3300
MARGIN	
TPI in 20 INCHES	
BODY TPI	0.09920
NECK TPI	0.03118
THROAT TPI	0.52372

DESIGNER
NAME Alex Wheeler
PHONE () _____

LENGTHS
TOLERANCE
+0.0050

JGS
COOS BAY, OR USA
97420

SIZE
A

DWN.
DATE 11/24/20

RIMLESS OR REBATED RIFLE
MINIMUM CHAMBER

SCALE NONE

PRINT # 300 PRC AW 2

COMMENT: Throat datum .306 X 2.890 from bolt face.

Use standard 300 PRC(3837) headspace gauges. 11/24/20: Alex Wheeler released print to the public.