



## Product Information Packet

# D50300P-BV

300HP, 1750/1900RPM, DC, 506AT, DPBV, F1, N

Part Detail							
Revision:	C	Status:	PRD/A	Change #:		Proprietary:	No
Type:	DC	Prod. Type:		Elec. Spec:	K0125A	CD Diagram:	15209
Enclosure:	DPFG	Mfg Plant:		Mech. Spec:		Layout:	1336-6
Frame:	0506A	Mounting:	F1	Poles:	00	Created Date:	04-09-2015
Base:		Rotation:	R	Insulation:	F	Eff. Date:	03-06-2019
Field Type:		Literature:		Elec. Diagram:		Replaced By:	

Specs			
Enclosure:	DPFG		
Frame:	506AT		
Frame Material:	Steel		
Agency Approvals:	CSA		
Base Indicator:	Rigid		
Bearing Grease Type:	Polyrex EM (-20F +300F)		
Drip Cover:	No Drip Cover		
Duty Rating:	CONT		
Feedback Device:	NO FEEDBACK		
Field Winding Type:	STR. SHUNT		
Heater Indicator:	No Heater		
Insulation Class:	F		
Lifting Lugs:	Standard Lifting Lugs		
Mounting Arrangement:	F1		
Shaft Extension Location:	Pulley End		
Shaft Ground Indicator:	No Shaft Grounding		

Shaft Slinger Indicator:	No Slinger		
Motor Standards:	NEMA		
Thermal Device - Bearing:	None		

## Nameplate NP1734

CAT.NO.	D50300P2-BV		MODEL	T50R8004	
HP	300	RPM	1750	FRAME	0506AT
ARM V	500	ARM A	478.00	WOUND	STR. SHUNT
FLD V	150/300	FLD A	18.14-12.40/9.07-6.20		
CONN		OHMS		CL	F
ENCL	DPFG	DUTY	CONT	MX AMB	40
P CODE	C	CTSR		SER.F.	1.00
S/N			E/S	K00125A	
	BRUSH:50034-2				
O.D.E. BRG.	6216	D.E. BRG.	6218	BRUSH	
					QTY

Parts List		
Part Number	Description	Quantity
SA296987	SA T50R8004	1.000 EA
AA016038	AA T50R8004	1.000 EA
036170004DA	DRSCW METRIC NAMEPLATE	4.000 EA
150247	CAUTION LABEL,BLWR WHEEL ROTATION,MYLAR	1.000 EA
NP1734	NPL,BALDOR DC MTR ALUMINUM	1.000 EA
15209	LABEL CONNECTIONS & TERMINAL MARKIN	1.000 EA
032018004BK	HHCS 5/16-18X1/2 PLATED	4.000 EA
15094	DISHED LOCKWASHER .332 ID, .865 OD	4.000 EA
50009-3	BRUSH ROCKER ASSY FR 50 SERIES	1.000 EA
50034-2SP	BRUSH,500 FR. SERIES E-77 SGL/CARBON	12.000 EA
004824015A	GREASE POLYREX EM	1.100 LB
032018014CK	HHCS 3/8-16X1-3/4L	4.000 EA
032018014EK	HHCS 5/8-11X1-3/4 PLTED.	4.000 EA
032018014EK	HHCS 5/8-11X1-3/4 PLTED.	4.000 EA
032018016CK	HHCS 3/8-16X2 PLATE	4.000 EA
035000001A	ALFTG 1/8" 1610-BL	1.000 EA
035000001A	ALFTG 1/8" 1610-BL	1.000 EA
50028	FAN SHROUD FR500 THIS IS NOT A TEFC SHRD	1.000 EA
50051-9	CE BRKT MACH FR 500 STD FOR LOCKED	1.000 EA
50052-10	FE BRKT MACH FR 500 STD FOR LOCKED	1.000 EA
85XU1008A06	10-32X3/8 TY U DRIVE	4.000 EA
HW4500A17	317400 ALEMITE GREASE RELIEF	1.000 EA
HW4500A17	317400 ALEMITE GREASE RELIEF	1.000 EA
HW5100A18	WAVY WASHER, WB#W6173-058	1.000 EA

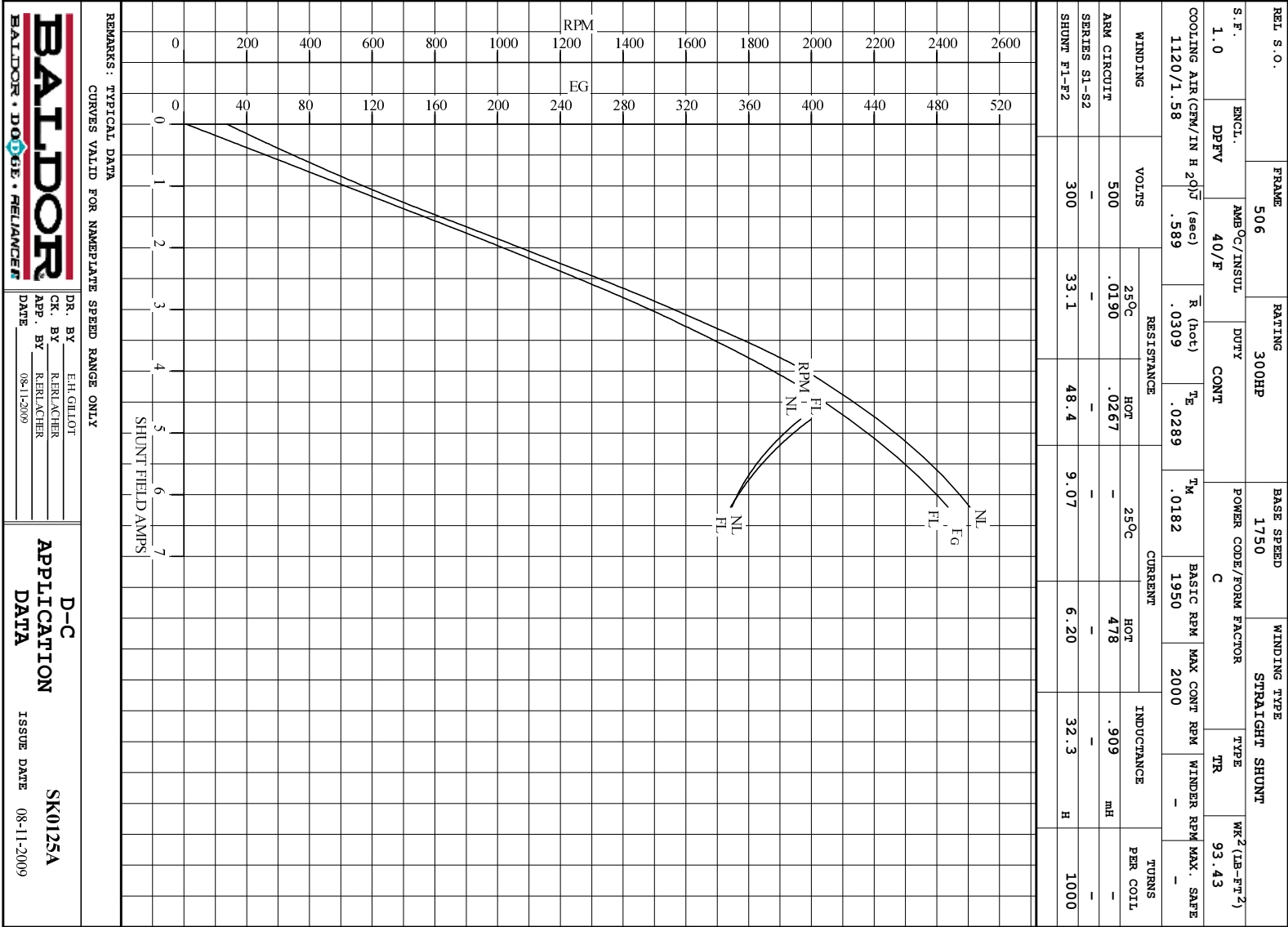
Parts List (continued)		
Part Number	Description	Quantity
032018004AK	HHCS 1/4-20X1/2 PLATED	3.000 EA
032018004BK	HHCS 5/16-18X1/2 PLATED	2.000 EA
032018004BK	HHCS 5/16-18X1/2 PLATED	4.000 EA
032018006BK	HHCS 5/16-18X3/4 PLATED	4.000 EA
032018006DK	HHCS 1/2-13X3/4 PLATED	4.000 EA
032018008CK	HHCS 3/8-16X1L PLATED	4.000 EA
034036014AB	EX.TOOTH LCKW 3/8 PLTD.	1.000 EA
10223	LM8 BLOWER ASSEMBLY LARGE MOTOR	1.000 EA
032130004BA	HSHCS 1/2 IN.	48.000 EA
P10230	FILTER KIT FOR LM8/LM9 BLOWER ASSEMBLY	1.000 EA
15021-1	ACCESSORY FACE COVER FRAME 180-500 SERIE	1.000 EA
15025	TERMINAL BOX BACK FRAME 36 & 40 SERIES #	1.000 EA
15026-1	COVER TERM BOX MACH FR 36 & 40 SERIES	1.000 EA
150906-62	GRDG STUD,HX HD BOLT 3/8-16,W/HD PAINTED	1.000 EA
36246	GASKET,TERM.BOX,FR.360 1/8 THK ARMSTRONG	1.000 EA
40030-1	FLANGENIPPLEMACH400FRAME3"-8N.P.T40030	1.000 EA
50025-2	VENT COVER,FAN END #16 GA STEEL	3.000 EA
50026-1	SOLID CVR,FE,FR-500 14GA (.075THK)	1.000 EA
50026-2	SOLID CVR,CE,FR-500 14GA (.075THK)	3.000 EA
50027-1	GASKET CVR,FE,FR-500 3/32 THK CORK/NEOPR	4.000 EA
50027-2	GASKET CVR,CE,FR-500 3/32 THK CORK/N	4.000 EA
50056	LM-8 BLWR ADAPTER FR 500 SERIES	1.000 EA
HW4001A12	3.00 NPT SQUARE HEAD PIPE PLUG	1.000 EA
004824007BTW	SPECIAL PAINT4824-3BVZ	0.500 EA

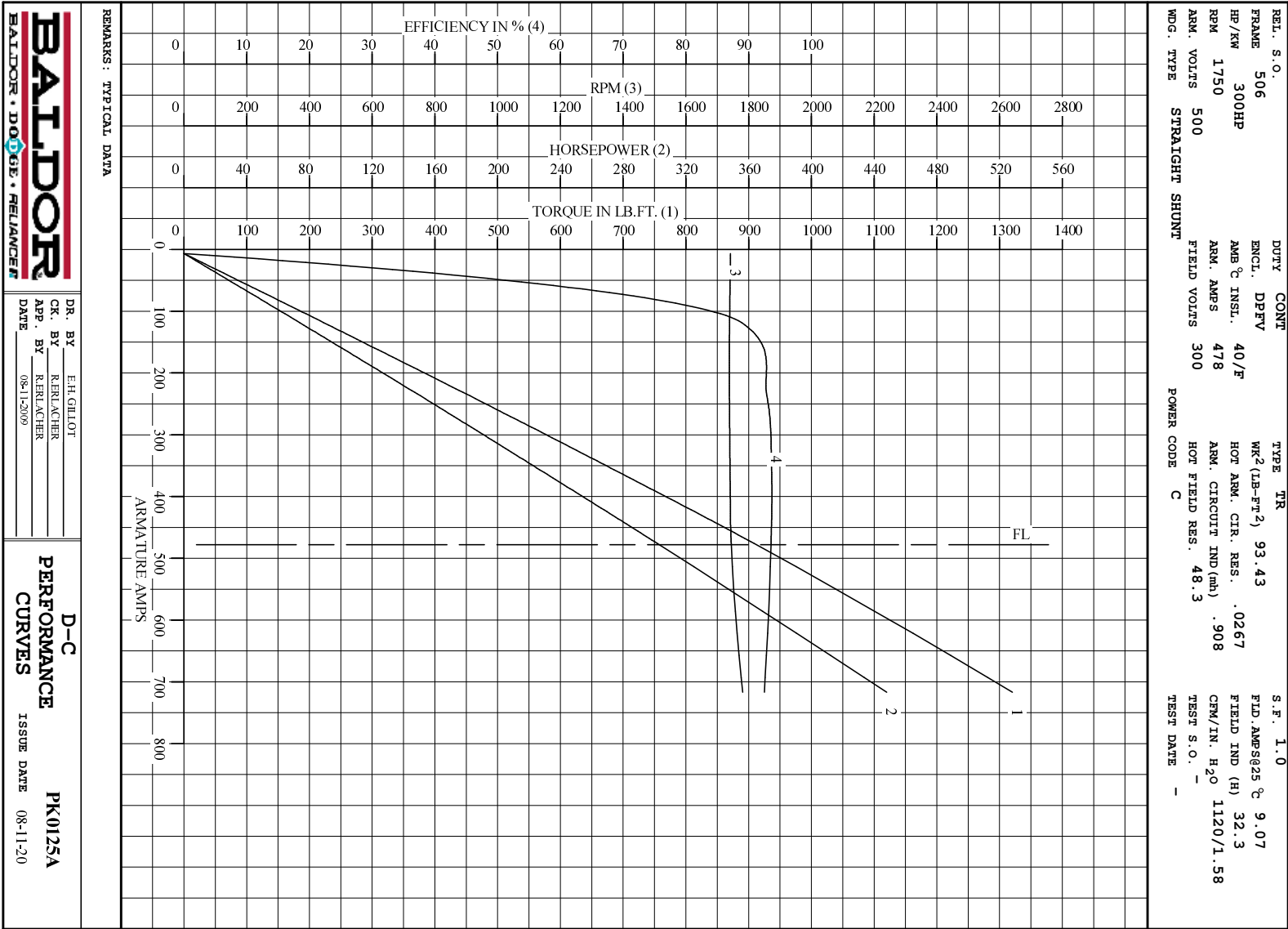
034180042JA	KEY FE SHAFT EXT	1.000 EA
18PA1006	PACK FOR 449 SKID; STOCK	1.000 EA

REL. S. O.	FRAME	RATING	RPM	ARM. VOLTS	ARM. AMPS
	506	300HP	1750	500	478
WINDING TYPE					
	S. F.	ENCL.	AMB °C/INSUL	DUTY	FIELD VOLTS
STRAIGHT SHUNT	1.0	DPFV	40/F	CONT	300
POWER CODE					
	TYPE	WK <sup>2</sup> (LB-FT <sup>2</sup> )	HOT ARM. CIR. RES.	FLD. AMPS@25 °C	HOT FIELD RES
C	TR	93.43	.0267	9.07	48.3
ARM. CIR. IND. (mh)					
	FIELD IND. (H)	COOLING AIR (CFM/IN H 20)		TURNS PER COIL SHUNT/SERIES	TEST DATE
.908	32.3	1120/1.58		1000/.00000	-
LOAD PERFORMANCE					
LOAD	AMPERES	TORQUE IN LB.-FT.	OUTPUT IN HP	RPM	% EFFICIENCY
NO LOAD	6.7	0	0	1743	0
1/4	120	225	74.4	1739	89.0
2/4	239	460	152	1739	92.9
3/4	359	689	228	1741	93.7
4/4	478	912	303	1745	93.6
O.L.	717	1320	448	1781	92.5
RPM VS. FIELD AMPS					
FIELD AMPS	RPM N.L.	RPM F.L.	Eg N.L. @ BASE SPEED	Eg F.L. @ BASE SPEED	
6.20	1742	1744	501	487	
5.84	1780	1788	491	474	
5.48	1827	1844	479	460	
5.13	1888	1913	463	443	
4.77	1965	2000	445	424	
REMARKS: TYPICAL DATA					

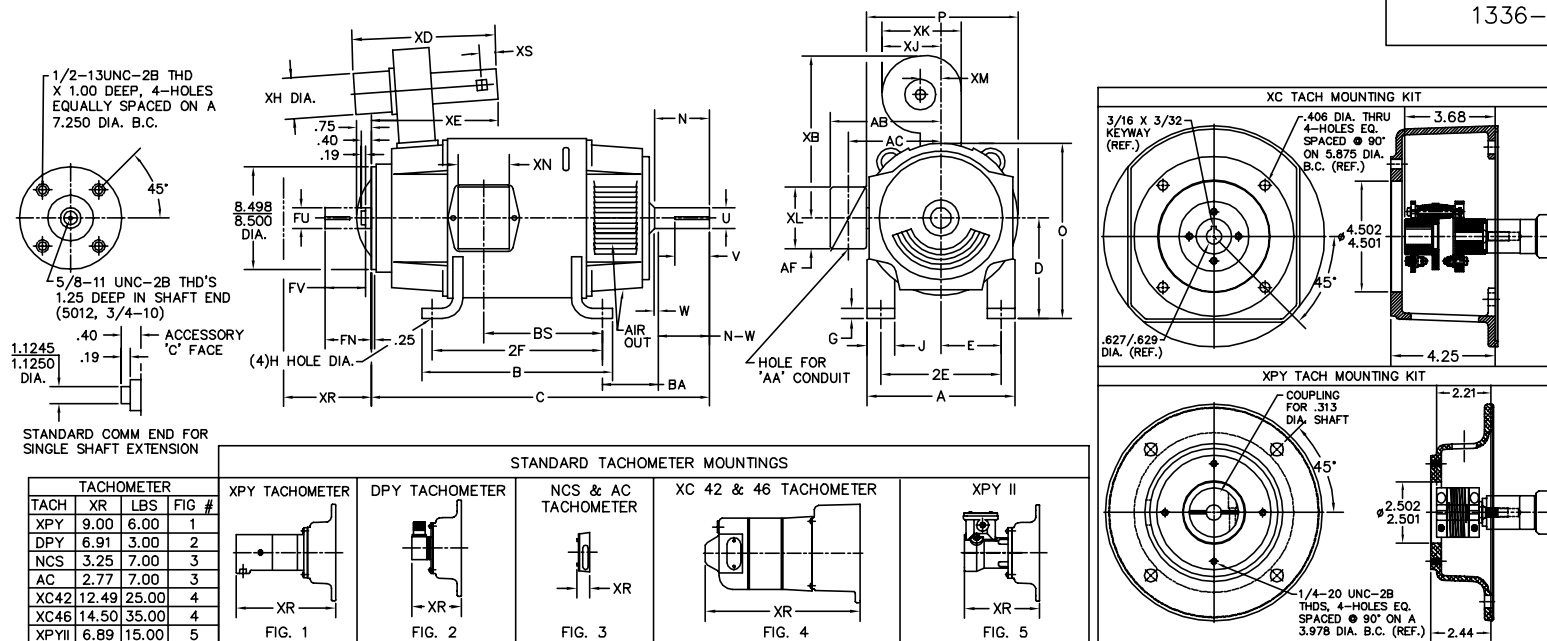
<b>BALDOR</b> BALDOR • DOUG • RELIANCE	DR. BY E. H. GILLIOT	D-C MOTOR PERFORMANCE DATA ISSUE DATE 08-11-2009
	CK. BY R. ERLACHER	
	APP. BY R. ERLACHER	
	DATE 08-11-2009	







1336-6



	FOOT MOUNTING						D.E. SHAFT EXTENSION					DRIVE KEY		ACC SHAFT EXTENSION			ACC KEY		FRAME					
FRAME	BA	E	2F	G	H	J	N	N-W	U	V	W	KEY-SQ.	KEY-LONG	FN	FU	FV	KEY-SQ.	KEY-LONG	A	B	C	D	O	P
504AT	8.50	10.00	16.00	1.18	1.188	4.50	6.76	6.57	3.250	6.32 <sup>3</sup>	.19	.750	5.25	5.95	2.875	5.70	.750	5.00	24.88	18.88	45.00	12.50 <sup>2</sup>	24.91	24.81
506AT	8.50	10.00	20.00	1.18	1.188	4.50	6.76	6.57	3.250	6.32 <sup>3</sup>	.19	.750	5.25	5.95	2.875	5.70	.750	5.00	24.88	22.88	49.00	12.50 <sup>2</sup>	24.91	24.81
508AT	8.50	10.00	25.00	1.18	1.188	4.50	6.76	6.57	3.250	6.32 <sup>3</sup>	.19	.750	5.25	5.95	2.875	5.70	.750	5.00	24.88	27.88	54.00	12.50 <sup>2</sup>	24.91	24.81
5010AT	8.50	10.00	32.00	1.18	1.188	4.50	6.76	6.57	3.250	6.32 <sup>3</sup>	.19	.750	5.25	5.95	2.875	5.70	.750	5.00	24.88	34.88	61.00	12.50 <sup>2</sup>	24.91	24.81
5011AT	8.50	10.00	36.00	1.18	1.188	4.50	6.76	6.57	3.375	6.32 <sup>3</sup>	.19	.875	5.25	5.95	2.875	5.70	.750	5.00	24.88	38.88	65.00	12.50 <sup>2</sup>	24.91	24.81
5012AT	8.50	10.00	43.00	1.18	1.188	4.50	7.06	6.87	4.250	6.62 <sup>3</sup>	.19	1.000	5.25	5.95	2.875	5.70	1.000	5.00	24.88	45.88	73.75	12.50 <sup>2</sup>	24.91	24.91

CONDUIT BOX																	BLOWER										ARM APPROX. WK <sup>2</sup> LBS.FT. <sup>2</sup>	APPROXIMATE WEIGHT
FRAME	AA	AB	AC	AF	BS	XL	XN	SIZE	XB	XD	XE	XH	XM	XJ	XK	XS												
504AT	3	20.65	16.81	2.62	13.25	11.63	7.76	LM8	25.50	27.38	20.94	10.75	5.50	12.38	15.25	3.75	79.10	1957 <sup>5</sup>										
506AT	3	20.65	16.81	2.62	17.25	11.63	7.76	LM8	25.50	27.38	20.94	10.75	5.50	12.38	15.25	3.75	98.76	2337 <sup>5</sup>										
508AT	3	20.65	16.81	2.62	22.25	11.63	7.76	LM8	25.50	27.38	20.94	10.75	5.50	12.38	15.25	3.75	121.87	2867 <sup>5</sup>										
5010AT	4 <sup>4</sup>	21.20	16.81	2.84	30.12	13.40	13.50	LM9	25.50	28.31	20.94	10.75	5.50	12.38	15.25	3.75	156	3520 <sup>5</sup>										
5011AT	4 <sup>4</sup>	21.20	16.81	2.84	34.12	13.40	13.50	LM9	25.50	28.31	21.88	10.75	5.50	12.38	15.25	3.75	161	3880 <sup>5</sup>										
5012AT	4 <sup>4</sup>	21.20	17.19	2.84	41.12	13.40	13.50	LM9	25.50	28.31	21.88	10.75	5.50	12.38	15.25	3.75	170	5177 <sup>5</sup>										

- 1) SHAFT DIAMETERS TO 1.500 TOLERANCE +.0000 - .0005  
SHAFT DIAMETERS ABOVE 1.500 TOLERANCE +.0000 - .0010  
SHAFT DIAMETERS TO 1.625 RUNOUT .002 T.I.R. MAX.  
SHAFT DIAMETERS ABOVE 1.625 RUNOUT .003 T.I.R. MAX.
- 2) 'D' DIMENSION TOLERANCE +.000 - .060
- 3) 'V' DIMENSION IS MAX. HUB LENGTH ON SHAFT
- 4) THERE ARE TWO HOLES FOR 4" CONDUIT, SECOND HOLE IS 6" TOWARD DRIVE END.
- 5) TOTAL WEIGHT OF MOTOR AND BLOWER LESS TACH WEIGHT.
- 6) ALL DIMENSIONS NOT NOTED ARE NOMINAL DIMENSIONS CONSULT FACTORY FOR TOLERANCES.

FOR F1 OR F2 CONDUIT BOX  
LOCATION SEE SALES ORDER

CUSTOMER IS RESPONSIBLE FOR DETERMINING THAT MOTOR PERFORMANCE IS SUITABLE IN THE APPLICATION.

REV. DESC: CHG (5011)U DIM TO 3.375, KEY-SQ TO .875

REV. LTR: G BY: MBT REVISED: 15:36:36 07/17/2002 TDR: 273841

9-9551

FILE: CHB00001076

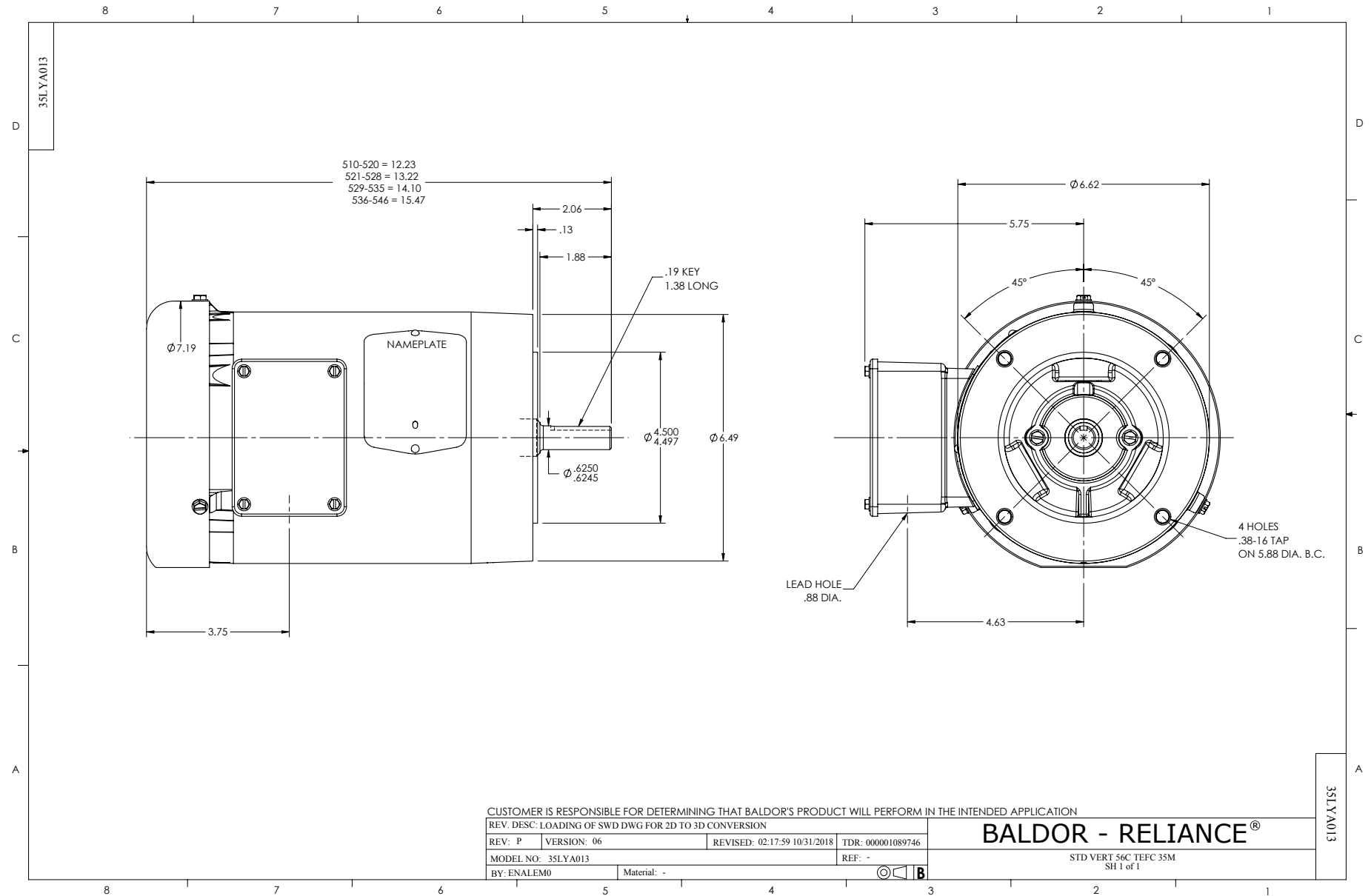
REF: 1336-6

MTL: -

BALDOR ELECTRIC Co.

DIM SHEET: 504-5012AT,DPBV,W/TACH

1336-6



15209

ALUMINUM (MATT) BACKGROUND WITH BLACK LETTERS

LABEL MANUFACTURER IDENTIFYING MARK TO APPEAR HERE

3 1/4

2 1/2

15209

CONNECTIONS AND TERMINAL MARKINGS

SHUNT FIELD

ARM COMM FLD

SERIES FLD

F1 F2 F3 F4

F1,F3 F2,F4

FOR STRAIGHT SHUNT MOTORS: DISREGARD S1 AND S2.

FOR SERIES MOTORS: DISREGARD F1,F2,F3,F4.

STRAIGHT SHUNT: F1 AND A1 SAME POLARITY, ROTATION CCW.

SERIES: CONNECT A2 AND S1, ROTATION CCW.

STABILIZED SHUNT AND COMPOUND: F1 AND A1 SAME POLARITY. CONNECT A2 AND S1, ROTATION CCW.

FOR CW ROTATION: INTERCHANGE A1 AND A2. ROTATION VIEWED FROM OPPOSITE DRIVE END. FOR FIELD REVERSING MOTORS WITH A SERIES FIELD: S1 MUST REVERSE POLARITY WHEN F1 REVERSES.

THERMOSTAT: WHEN SUPPLIED WILL HAVE LEADS TAGGED P1 AND P2. THERMOSTAT SENSES HEAT OF COMMUTATING FIELD COIL.

AMPERE RATINGS OF CONTACTS.

MAX AMPS BREAK			MAX CONTINUOUS	
120 VAC	240 VAC	24 VDC	AMP - ALL VOLTAGES	
12	8	2	2	

SPACE HEATER: WHEN SUPPLIED WILL HAVE LEADS TAGGED H1 AND H2. SEE MOTOR NAMEPLATE FOR HEATER VOLTAGE AND CURRENT.

UNLESS OTHERWISE SPECIFIED,  
BREAK ALL SHARP EDGES .010/.020.  
REMOVE ALL BURRS.

TOLERANCES

.X ±.015 FRACTIONS ±1/32  
.XX ±.010 RADII ±1/16  
.XXX ±.005 ANGLES ±1°

MATL: NOTED

REV: G CHANGE ALL "NAMEPLATE" TEXT TO "LABEL"

60ZS1

SCALE: - BY: BKW REVISED: 02/19/97  
FILE: CHB00002485 TDR: 0115147

BALDOR ELECTRIC Co.

LABEL, CONNECTIONS AND TERMINAL MARKINGS DC

15209

Page 13 of 13

Marketing maintained PDF of MN605:

<http://www.baldor.com/support/Literature/Load.ashx/MN605?ManNumber=MN605>