



SURGEON RIFLES

## 591 SHORT ACTION

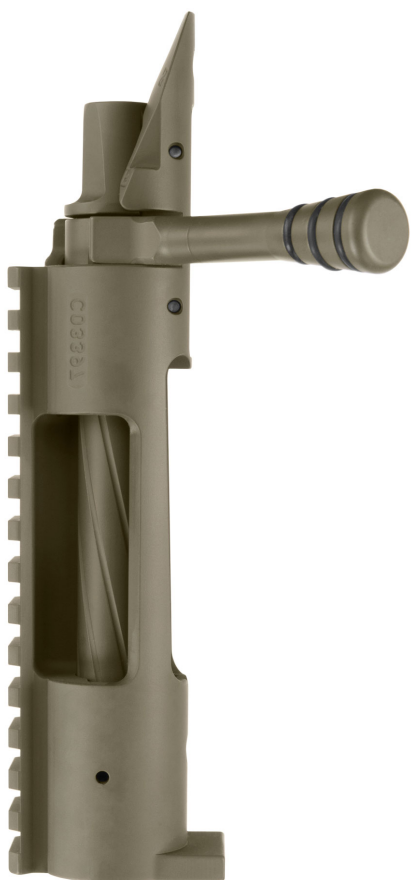
525 E. Pinnacle Peak Rd. Ste. 100 Phoenix, AZ. 85024  
623-780-1050 | salesorders@sacfirearms.com

### OVERVIEW

All 591 actions are designed with an integral .250" recoil lug and 20 MOA 1913 MIL-STD picatinny rail that runs the full length of the action. A side-mounted, shrouded, bolt-stop is integrated to help prevent accidental releasing of the bolt. In the middle of the left bolt raceway is an anti-jam rail. This rail is designed to prevent a round from lodging in the raceway when single-loading the rifle. (Available in single shot, left hand and right hand.

### SPECS/AVAILABLE OPTIONS

<b>ACTION</b>	591 SHORT ACTION (LH   RH)
<b>ACTION MATERIAL</b>	4140 CHORME MOLY 38-40RC
<b>BOLT FACE OPTIONS</b>	.384   .473   .550
<b>EXTRACT OPTIONS</b>	MINI M-16
<b>BOLT</b>	ONE PIECE, FLUTED, TWO LUG
<b>BOLT KNOB</b>	TACTICAL, STANDARD, ROUND, O-RING
<b>THREAD</b>	1-1/16 16UN
<b>FINISH</b>	MATTE (SHIPS UNFINISHED)
<b>OVERALL LENGTH</b>	8.125"
<b>WEIGHT</b>	2LBS. 5.6OZ.



Surgeon Rifles®

©2021 Surgeon Rifles. All Rights Reserved.

