



US010054399B2

(12) **United States Patent**  
**VanBecelaere**

(10) **Patent No.:** **US 10,054,399 B2**

(45) **Date of Patent:** **Aug. 21, 2018**

(54) **SELF-ILLUMINATING TURRET COVER**

(56) **References Cited**

(71) Applicant: **Vista Outdoor Operations LLC**,  
Farmington, UT (US)

**U.S. PATENT DOCUMENTS**

(72) Inventor: **Jacob C. VanBecelaere**, Gardner, KS  
(US)

3,990,155 A 11/1976 Akin, Jr. et al.  
4,965,439 A 10/1990 Moore  
6,269,581 B1 8/2001 Groh  
6,862,832 B2 3/2005 Barrett  
7,703,679 B1 4/2010 Bennetts et al.  
7,937,879 B2 \* 5/2011 Hamilton ..... F41G 1/38  
42/111

(73) Assignee: **Vista Outdoor Operations LLC**,  
Farmington, UT (US)

8,166,697 B1 \* 5/2012 Sueskind ..... F41G 1/38  
42/119

(\*) Notice: Subject to any disclaimer, the term of this  
patent is extended or adjusted under 35  
U.S.C. 154(b) by 0 days.

(Continued)

**FOREIGN PATENT DOCUMENTS**

(21) Appl. No.: **15/646,466**

DE 202012102101 7/2012

(22) Filed: **Jul. 11, 2017**

*Primary Examiner* — Stephen Johnson

*Assistant Examiner* — Joshua T Semick

(65) **Prior Publication Data**

(74) *Attorney, Agent, or Firm* — Christensen, Fonder,  
Dardi & Herbert PLLC

US 2018/0010887 A1 Jan. 11, 2018

**Related U.S. Application Data**

(60) Provisional application No. 62/360,809, filed on Jul.  
11, 2016.

(51) **Int. Cl.**  
**F41G 1/38** (2006.01)  
**F41G 3/08** (2006.01)  
**G02B 7/00** (2006.01)  
**G02B 23/00** (2006.01)

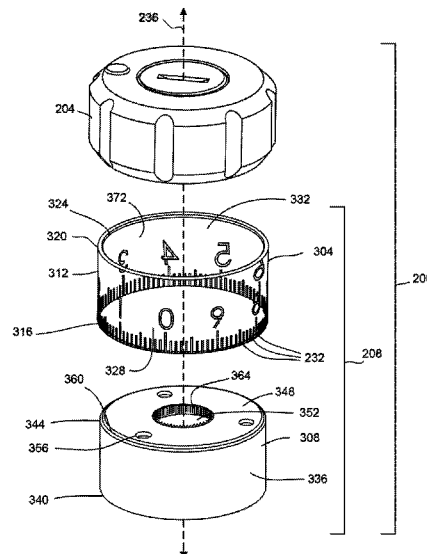
(52) **U.S. Cl.**  
CPC ..... **F41G 1/38** (2013.01); **F41G 3/08**  
(2013.01); **G02B 7/004** (2013.01); **G02B**  
**23/00** (2013.01)

(58) **Field of Classification Search**  
CPC ..... F41G 1/345; F41G 1/38  
See application file for complete search history.

(57) **ABSTRACT**

A turret cover for a turret assembly. In one or more embodi-  
ments the turret cover includes an upper portion including a  
turret housing defining a battery recess and an illumination  
recess. An illumination assembly can be mounted in the  
illumination recess. In various embodiments, the illumina-  
tion assembly includes a downwardly facing surface includ-  
ing a lighting element. In various embodiments, the turret  
cover includes a lower portion including an exterior sleeve  
portion of an at least partially transparent plastic material  
and a plurality of etched adjustment marks. In some embodi-  
ments, the lower portion is at least partially inserted into the  
illumination recess such that an upwardly facing edge of the  
exterior sleeve portion is positioned adjacent to the lighting  
element of the illumination assembly such that, in operation,  
the lighting element illuminates the plurality of etched  
adjustment marks via an edge lighting process.

**20 Claims, 11 Drawing Sheets**



(56)

**References Cited**

U.S. PATENT DOCUMENTS

8,464,451	B2	6/2013	McRae	
8,713,843	B2	5/2014	Windauer	
9,038,901	B2	5/2015	Paterson et al.	
9,062,934	B1 *	6/2015	Presley	..... F41G 1/387
9,151,570	B2	10/2015	Plaster	
9,829,277	B2 *	11/2017	Ratliff	..... F41G 1/345
2010/0229451	A1	9/2010	Hamilton	
2015/0247702	A1	9/2015	Davidson et al.	
2015/0285599	A1	10/2015	Downing	
2016/0146576	A1	5/2016	White et al.	
2017/0160055	A1 *	6/2017	Meinert	..... F41G 1/473

\* cited by examiner

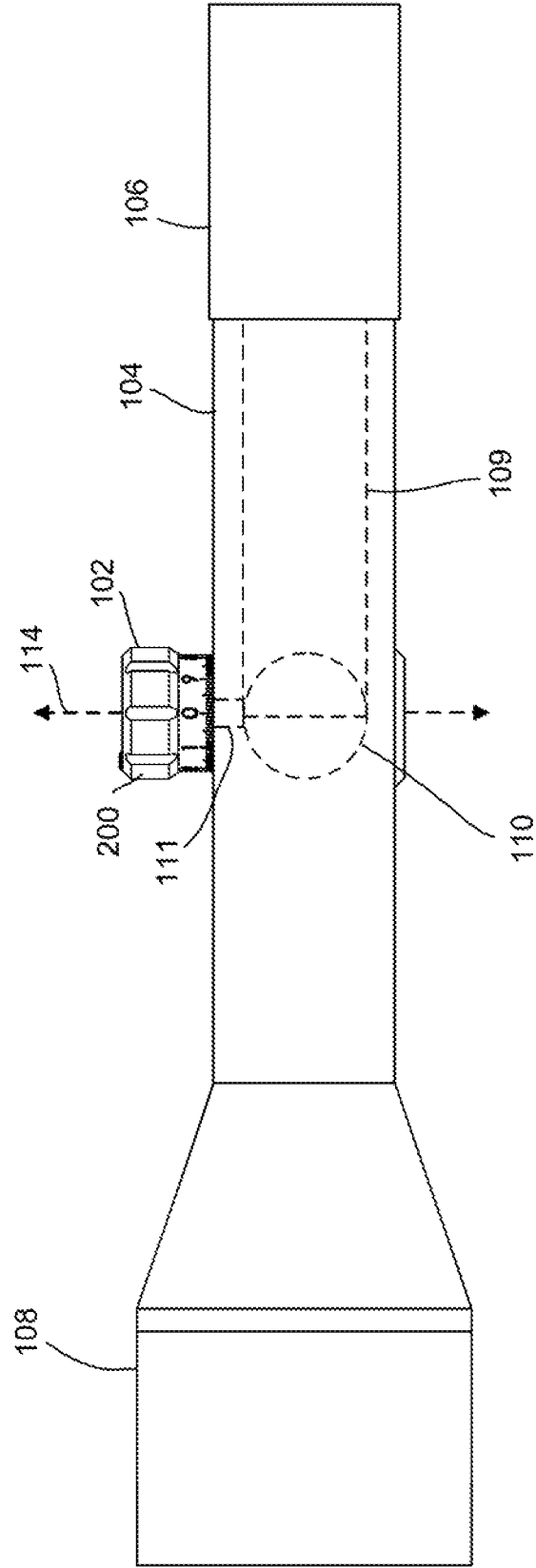


FIG. 1

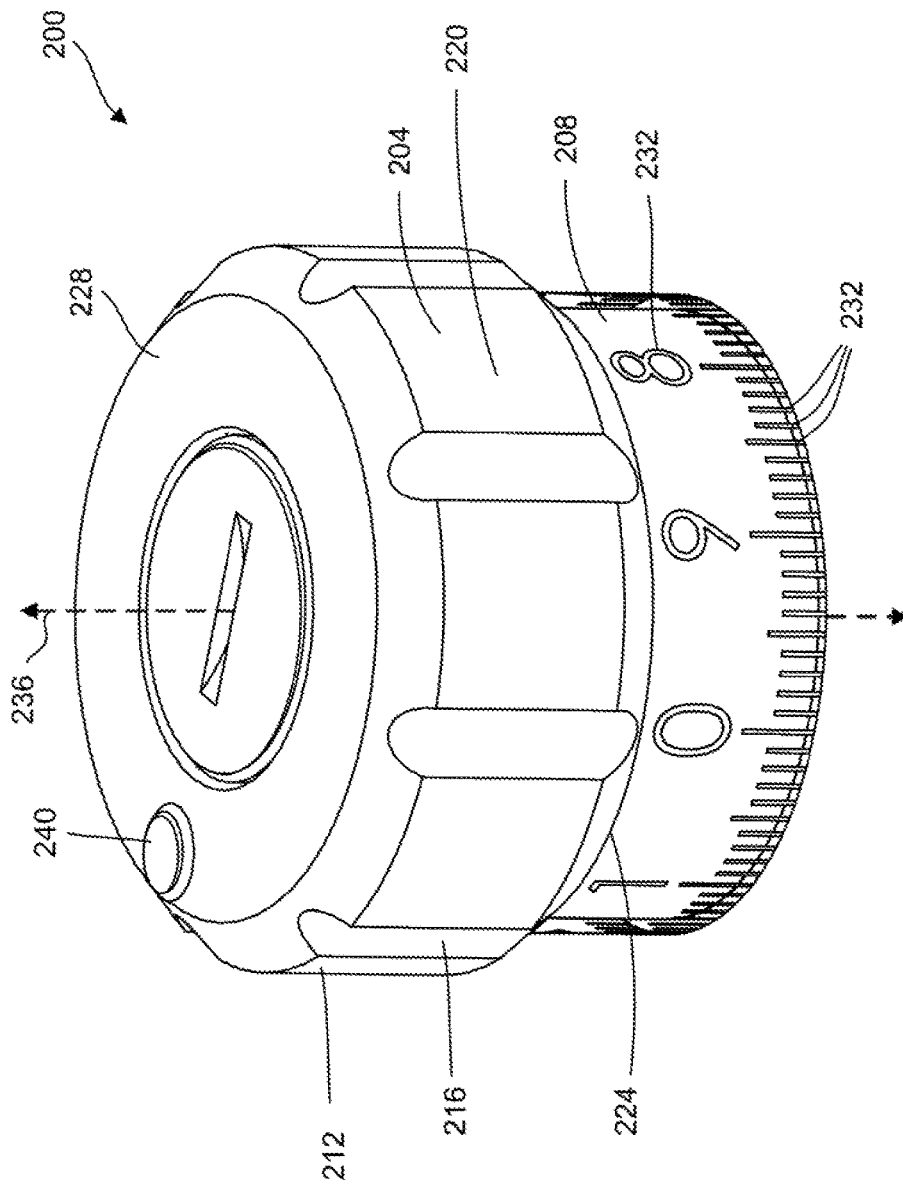


FIG. 2

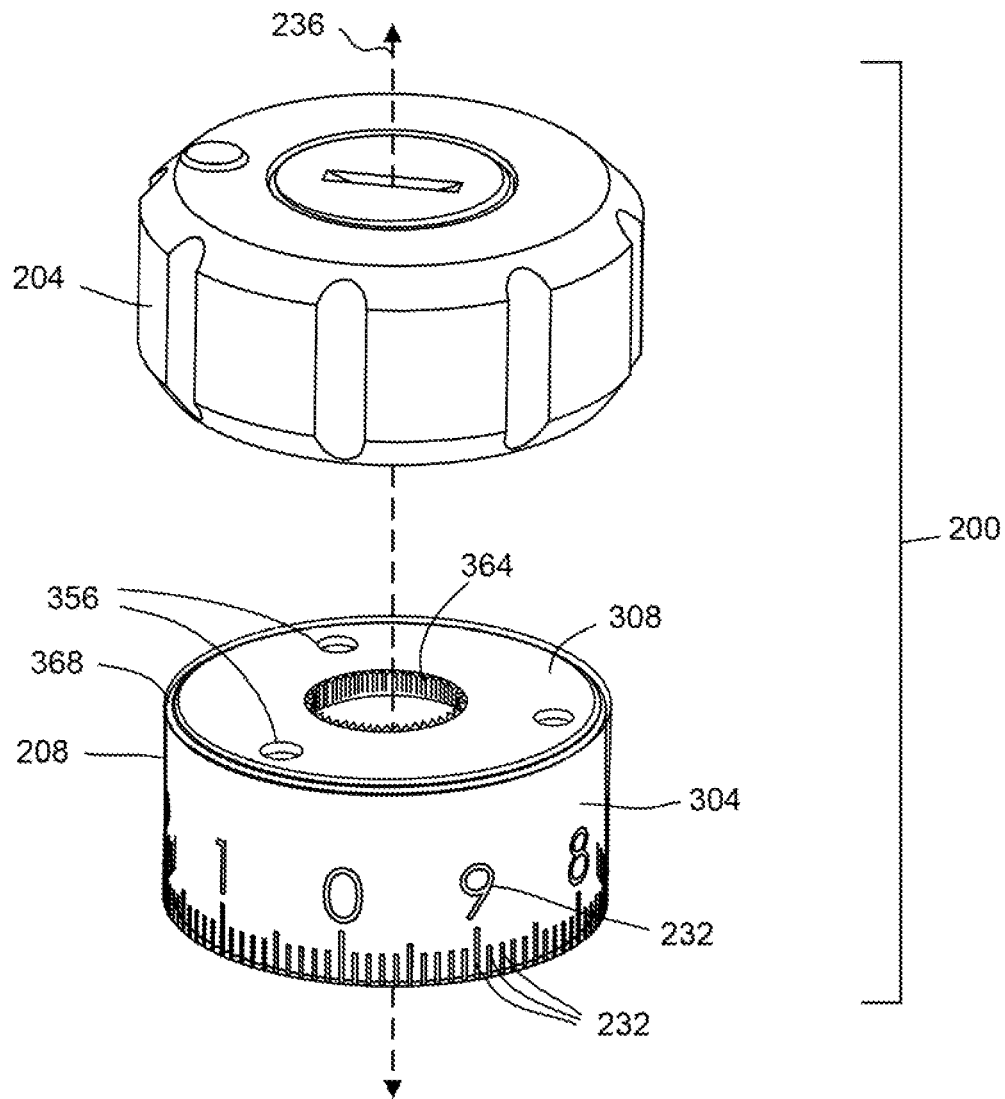


FIG. 3A

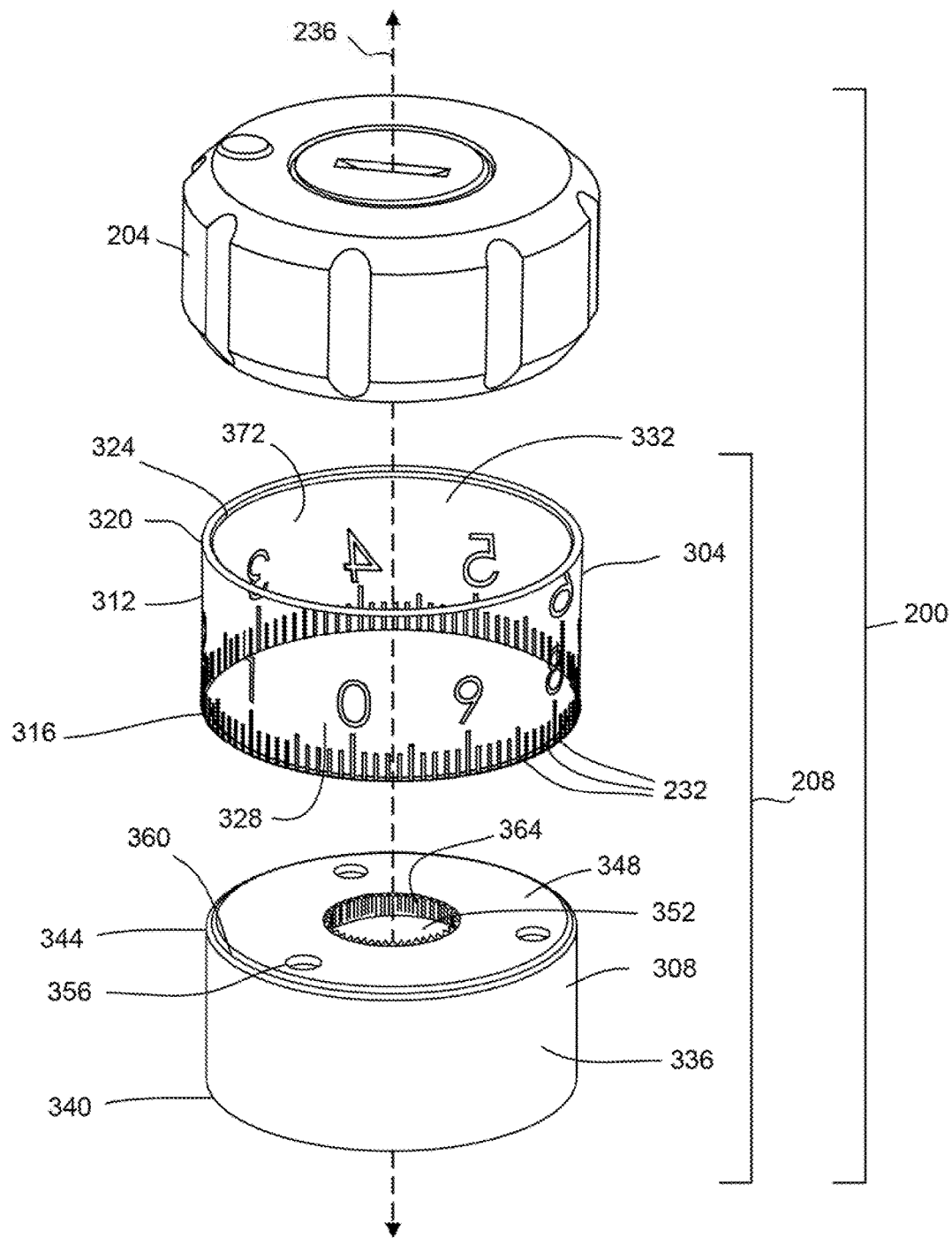


FIG. 3B

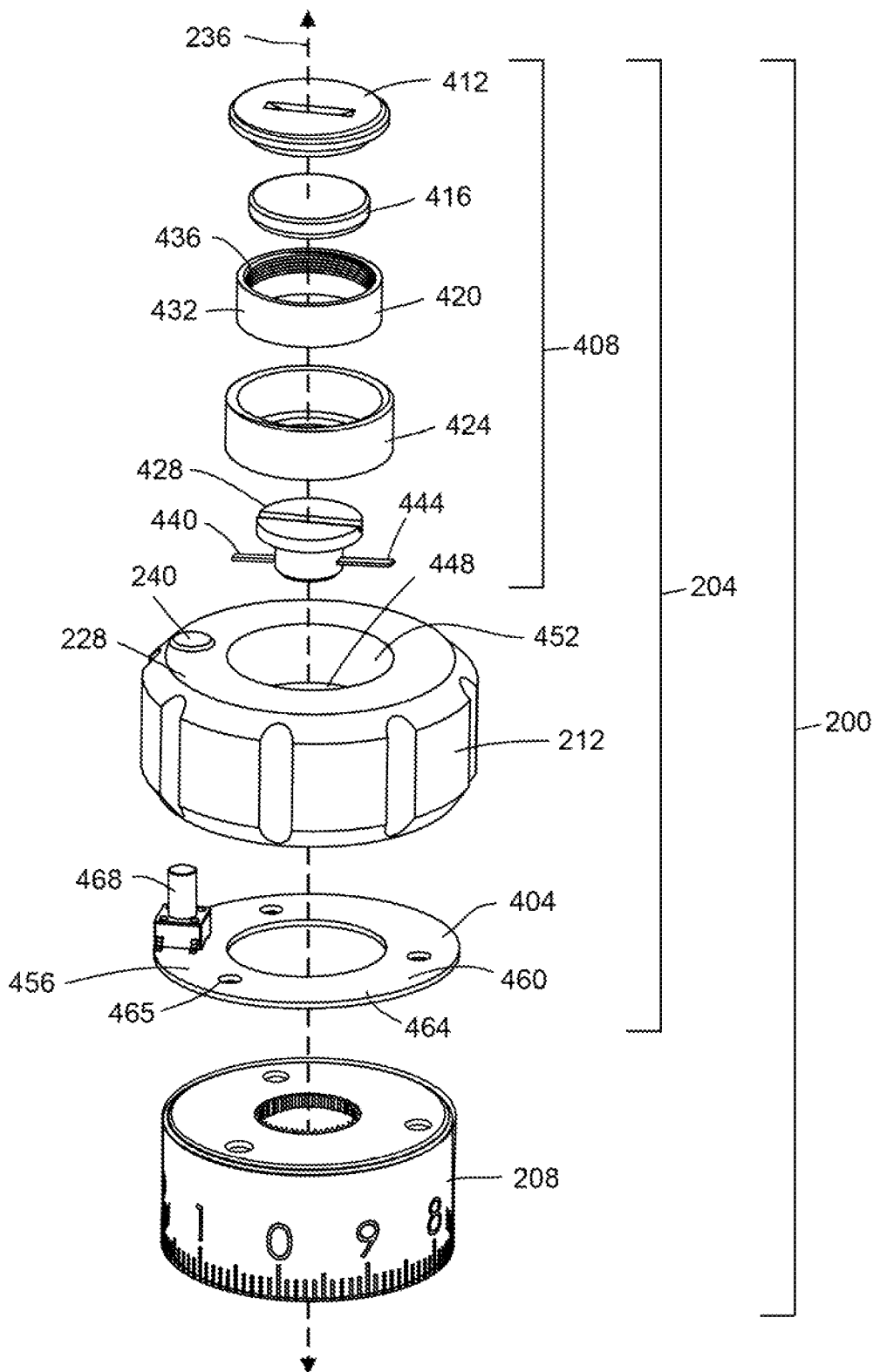


FIG. 4

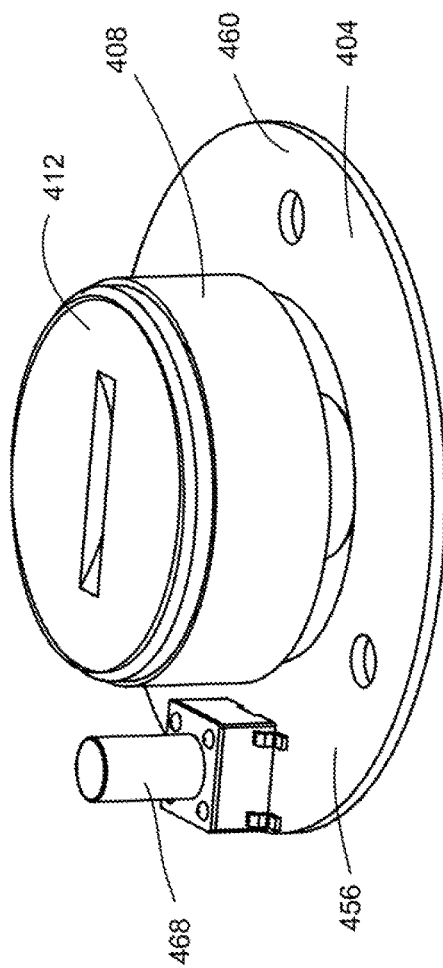


FIG. 5A

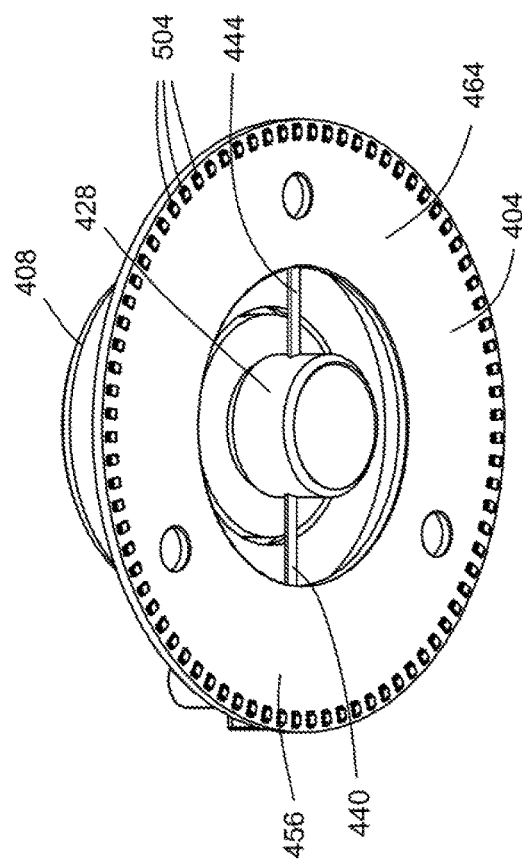
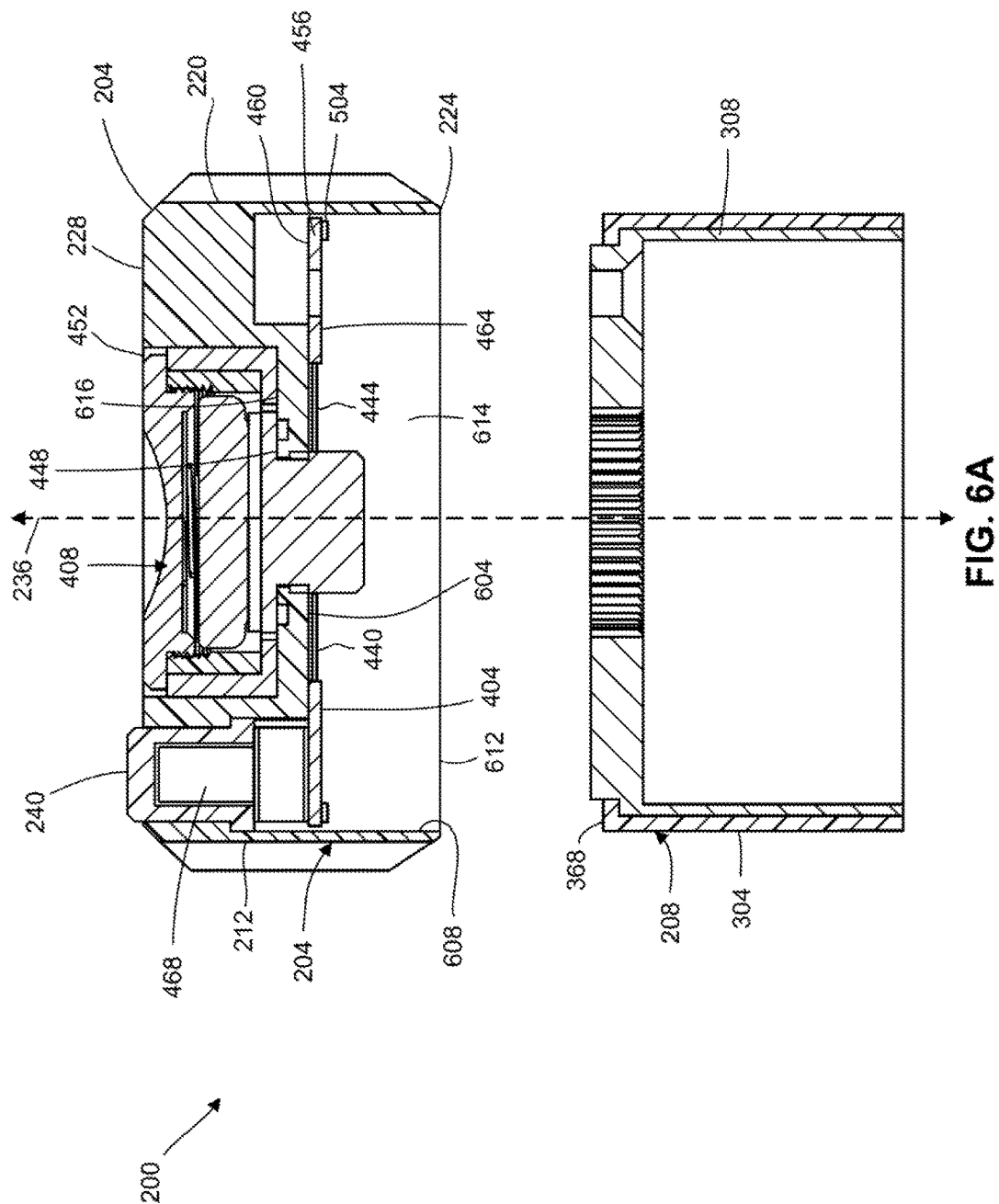


FIG. 5B





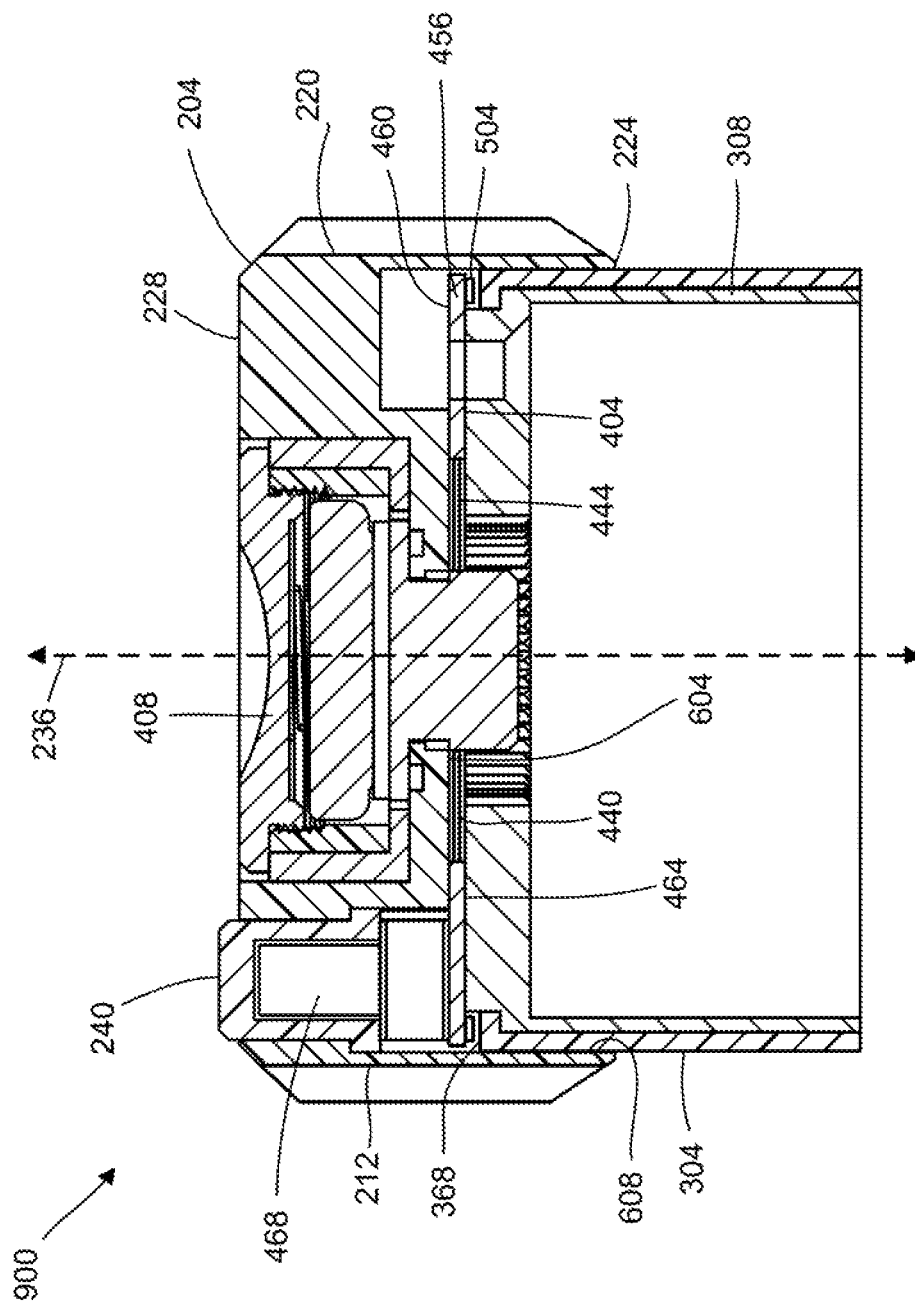


FIG. 6B

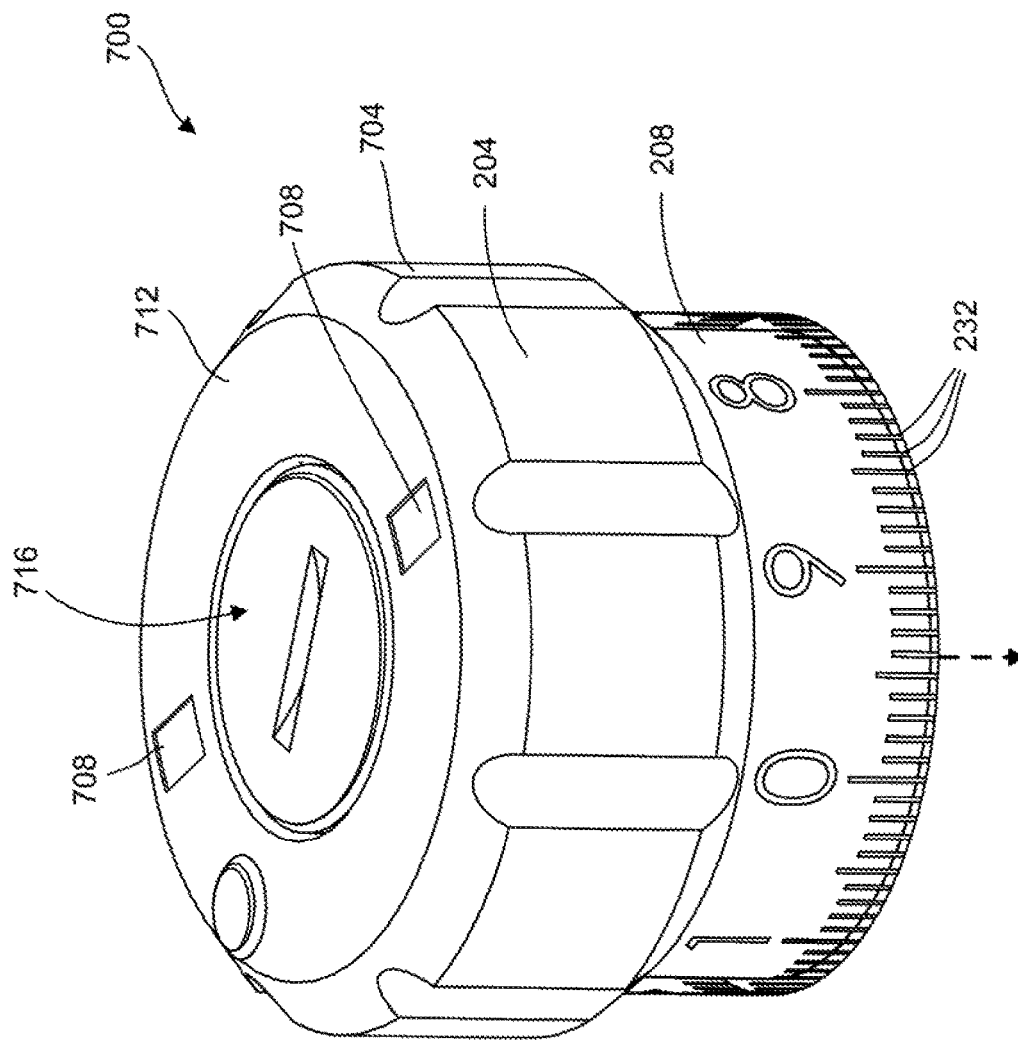


FIG. 7

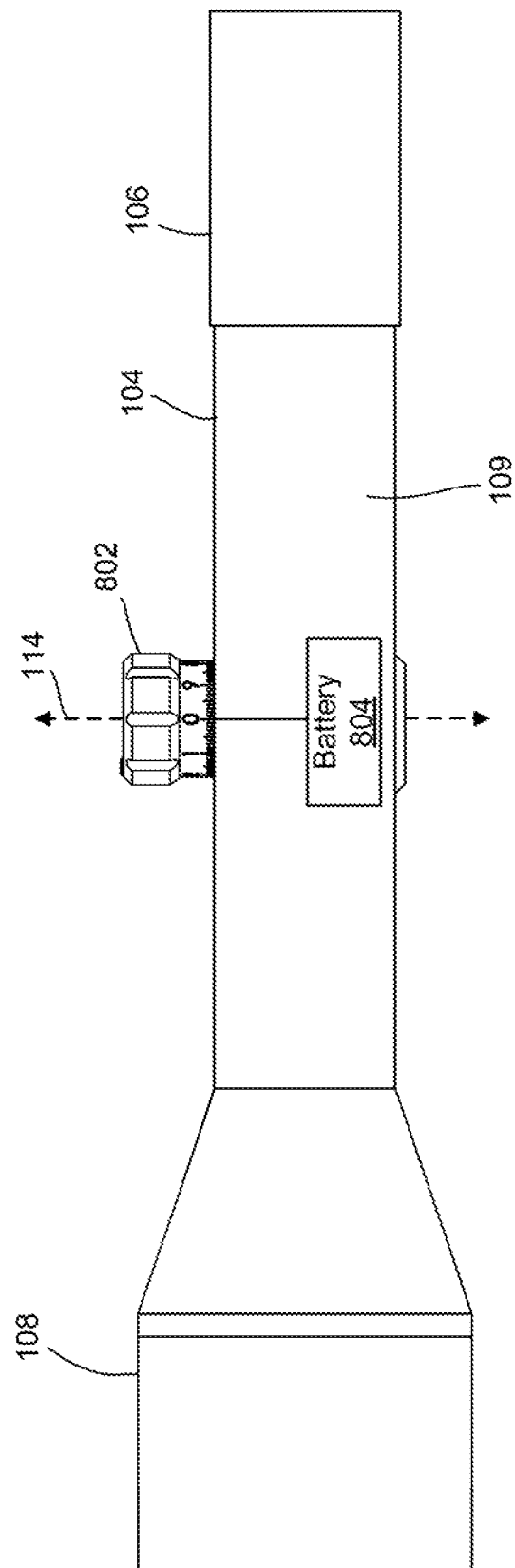


FIG. 8

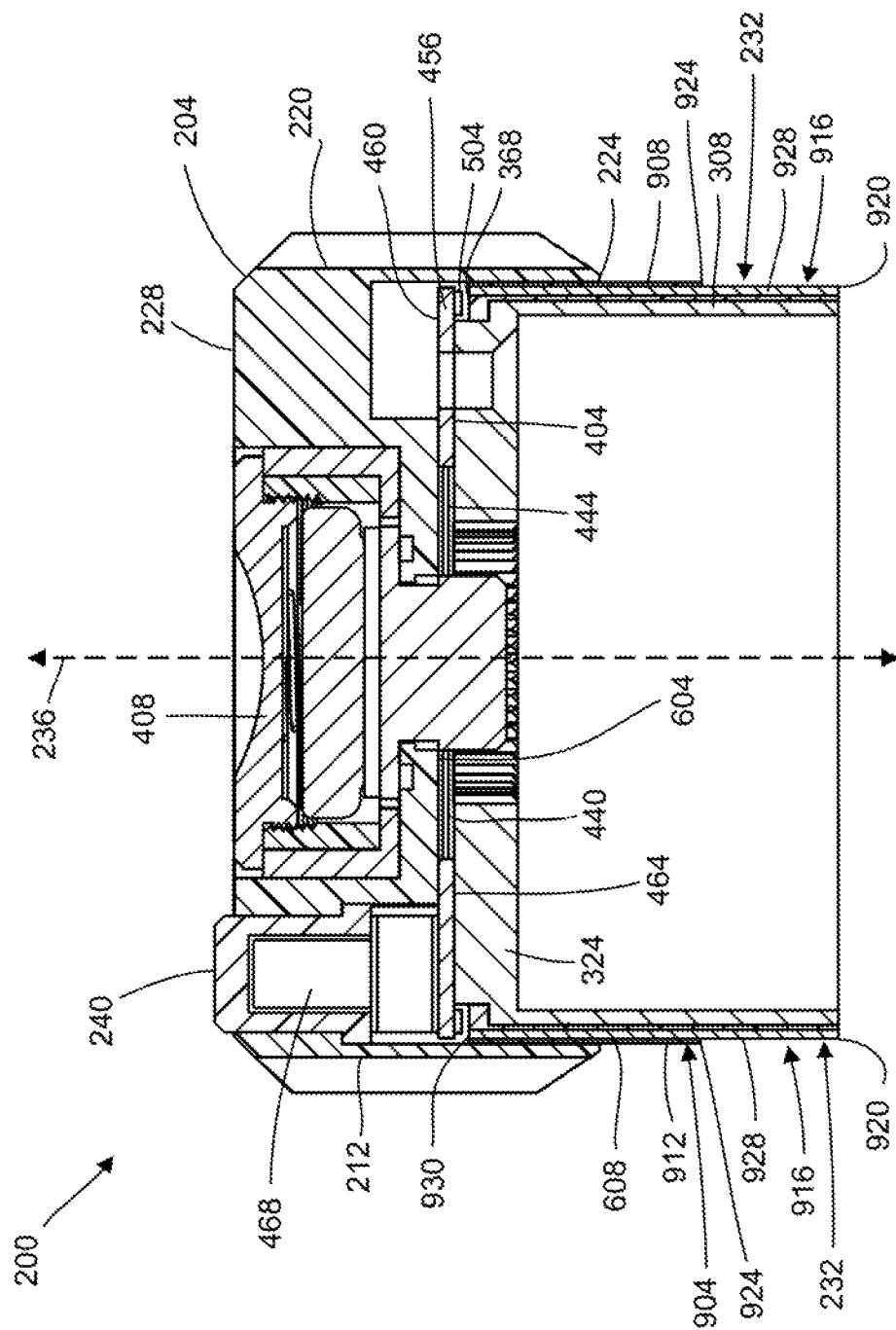


FIG. 9

1

**SELF-ILLUMINATING TURRET COVER****CROSS-REFERENCE TO RELATED APPLICATION**

This application claims the benefit of U.S. Provisional Patent Application No. 62/360,809, filed Jul. 11, 2016, the disclosure of which is incorporated by reference herein.

**TECHNICAL FIELD**

The present disclosure relates to a turret for a firearm aiming device. Specifically, the disclosure relates to a turret for a firearm aiming device, such as a riflescope, having illuminated adjustment markers.

**BACKGROUND**

Many firearms, such as rifles, are equipped with a firearm aiming device, such as a rifle scope, that provides the user with an image of an aligned aiming point or pattern (commonly known as a reticle) superimposed at the same focus as the target.

When shooting at long distances, shooters must adjust their aim to take into account the downward acceleration on the projectile imparted by gravity, which often referred to as “bullet drop.” This is typically done by adjusting the angular position of the rifle scope relative to the rifle barrel using an elevation turret. Additionally, shooters can adjust their aim to take into account lateral movement of the projectile imparted by wind forces. This is typically done by adjusting the position of the rifle scope for left-to-right movement relative to the rifle barrel using a windage turret.

A zero point (also sometimes referred to as a “zero mark” or “zero location” or similar) for a rifle scope is determined when “sighting” a rifle, or other firearm, at a known distance by adjusting the angular position of the riflescope relative to the rifle barrel, via the elevation turret, until the impact point of the bullet matches the point on the target coincident with the optical center of the riflescope reticle. The zero point of the riflescope is set such that the rifle is sighted in at a first known distance, sometimes referred to as the “zero distance” or in some cases, the “zero-stop distance.” This known distance is typically the shortest distance for which the rifle is sighted. For targets at greater distances than the zero distance, the elevation turret is rotated to adjust the angular position of the scope with respect to the rifle barrel to compensate for the greater amount of bullet drop over the longer distance. For example, a zero-point of a turret may be set to correspond to a zero distance of 100 yards. For distances greater than the zero distance of 100 yards, a user rotates or “dials” the elevation turret a predetermined amount, often measured in minutes of angle (MOA) or mils, such that the riflescope is sighted in for the greater distance. For example, in a typical riflescope turret having sighting indicia, the indicium/number “0” may correspond to the zero-point distance of 100 yards; the number 3, or 3 MOA may correspond to 200 yards, and so on. When the “0” indicium on the turret is aligned with an alignment mark (“zero mark”) on the riflescope body, the rifle scope is sighted in (“zeroed in”) at the zero distance, e.g., 100 yards, such that a bullet should accurately strike a target located 100 yards from the user.

Generally, a turret on a firearm aiming device includes multiple adjustment marks or indicators which are used to indicate to a shooter the amount of rotation that the turret has undergone to adjust the angular position of the scope. For

2

example, the adjustment marks can be compared to a static reference point on the riflescope to determine the MOA adjustment for zeroing in, or, after the riflescope is zeroed in, for adjustments to the angular position of the scope to compensate for bullet drop or wind.

**SUMMARY**

Various embodiments of the disclosure are directed to a turret cover for a turret assembly including self-illumination capabilities to improve the visibility of adjustment marks on the turret cover. In some instances, a shooter can have difficulty seeing adjustment marks on a turret cover when using a turret assembly. For example, the low-light conditions of early morning or late night, or when a shooter is positioned in an unlit structure, can present situations where a lack of light impairs the visibility of adjustment marks which in turn makes aiming adjustments for zeroing in a scope, or subsequent aiming adjustments more difficult.

Accordingly, various embodiments of the disclosure include, but are not limited to, a self-illuminated turret cover for a turret assembly. In one or more embodiments, the turret cover includes one or more internal lighting elements to illuminate adjustment markings via an edge lighting process. In various embodiments, the edge lighting process results in only the adjustment marks on the turret cover being illuminated, allowing for improved recognition and visibility of the adjustment marks including in low light conditions.

One or more embodiments of the disclosure include an upper portion and lower portion that are secured together to form the turret cover. In certain embodiments the upper cover includes a turret housing that defines a battery recess and an illumination recess. In certain embodiments, a battery assembly is mounted in the battery recess and an illumination assembly is mounted in the illumination recess and electrically connected to the battery assembly. In various embodiments, the illumination assembly includes one or more lighting elements. In one or more embodiments, the lower portion includes an exterior sleeve portion of an at least partially transparent plastic material that includes a plurality of etched adjustment marks. In various embodiments, the lower portion is at least partially inserted into the illumination recess such that an upwardly facing edge of the exterior sleeve portion is positioned adjacent to the one or more lighting elements of the illumination assembly. In certain embodiments, in operation, the one or more lighting elements of the illumination assembly are powered on by the battery assembly and illuminate, via an edge lighting process, the plurality of etched adjustment marks.

Some embodiments are directed to a firearm aiming device including a scope body including an interior erector assembly and reticle cell. In certain embodiments, a turret assembly is mounted on the scope body. In one or more embodiments the turret assembly includes an interior mechanical portion configured to engage the erector assembly within the scope body for making aiming adjustments. In one or more embodiments, the turret assembly further includes a turret cover enclosing the interior mechanical portion. One or more embodiments include an upper portion and lower portion that are secured together to form the turret cover. In one or more embodiments, the upper portion includes a turret housing having a sidewall extending from a lower end to a top surface. In certain embodiments, the lower end of the sidewall defines a first opening in the turret housing to a downwardly facing interior surface that, along with a first interior surface of the sidewall, defines an illumination recess in the turret housing. In some embodi-

3

ments, the top surface defines a second opening in the turret housing to an upwardly facing interior surface that, along with a second interior surface of the sidewall, defines a battery recess. In one or more embodiments, the turret cover includes a battery assembly mounted in the battery recess and an illumination assembly mounted in the illumination recess and electrically connected to the battery assembly.

In one or more embodiments, the illumination assembly includes a circuit board having an upwardly facing surface positioned adjacent to the downwardly facing interior surface of the illumination recess. In certain embodiments, the circuit board includes a downwardly facing surface including one or more lighting elements.

In certain embodiments, the lower portion includes an exterior sleeve portion of an at least partially transparent plastic material surrounding an interior backing portion. In various embodiments, the exterior sleeve portion includes a plurality of adjustment marks etched into the at least partially transparent material. The lower portion can be at least partially inserted into the illumination recess and secured or fastened to the upper portion such that an upwardly facing edge of the exterior sleeve portion is positioned adjacent to the one or more lighting elements of the illumination assembly. As such, in one or more embodiments, when in operation, the one or more lighting elements of the illumination assembly are powered on by the battery assembly thereby illuminating the plurality of etched adjustment marks via an edge-lighting process.

Certain embodiments of the disclosure are directed to a system for illumination of a turret assembly on a firearm aiming device. In some embodiments, the system includes a turret cover, including an upper portion including a turret housing defining an illumination recess. In one or more embodiments, the turret cover includes a lower portion including an exterior sleeve portion of an at least partially transparent plastic material, the exterior sleeve portion including a plurality of adjustment marks etched into the at least partially transparent material, the lower portion at least partially inserted into the illumination recess such that an upwardly facing edge of the exterior sleeve portion is positioned adjacent to one or more lighting elements of the illumination assembly. And in some embodiments, the system includes a battery assembly electrically coupled to the turret cover and the illumination assembly.

Some embodiments are directed to a turret cover including a lower portion including an exterior sleeve portion having a sidewall extending from a lower end to an upper end and defining a first opening at the upper end and a second opening at the lower end. In various embodiments the sidewall includes a plurality of optical fibers, each of the plurality of optical fibers positioned at least partially within the sidewall and extending between the upper end and lower end of the sidewall. In certain embodiments each of the plurality of optical fibers have an exposed first end at an upwardly facing edge of the upper end of the sidewall, the sidewall including a plurality of adjustment marks spaced circumferentially about an exterior surface of the sidewall. In one or more embodiments the lower portion is at least partially inserted into the illumination recess such that the upwardly facing edge is positioned adjacent to the lighting element of the illumination assembly. In various embodiments, in operation, the lighting element of the illumination assembly is powered on by the battery assembly and illuminates, via the plurality of optical fibers, the plurality of adjustment marks.

4

The above summary is not intended to describe each illustrated embodiment or every implementation of the present disclosure.

#### BRIEF DESCRIPTION OF THE SEVERAL VIEWS OF THE DRAWINGS

The drawings included in the present application are incorporated into, and form part of, the specification. They illustrate embodiments of the present disclosure and, along with the description, serve to explain the principles of the disclosure. The drawings are only illustrative of certain embodiments and do not limit the disclosure.

FIG. 1 depicts a side view of a firearm aiming device and turret assembly, according to one or more embodiments of the disclosure.

FIG. 2 depicts a perspective view of a turret cover, according to one or more embodiments of the disclosure.

FIGS. 3A and 3B depict exploded views of a turret cover, according to one or more embodiments of the disclosure.

FIG. 4 depicts an exploded view of an upper portion of a turret cover, according to one or more embodiments of the disclosure.

FIGS. 5A and 5B depict perspective views of a battery assembly and illumination assembly, according to one or more embodiments of the disclosure.

FIGS. 6A and 6B depict a cross-sectional view of a turret cover, according to one or more embodiments of the disclosure.

FIG. 7 depicts a perspective view of a turret cover, according to one or more embodiments of the disclosure.

FIG. 8 depicts a side view of a firearm aiming device and turret assembly, according to one or more embodiments of the disclosure.

FIG. 9 depicts a cross-sectional view of a turret cover, according to one or more embodiments of the disclosure.

While the embodiments of the disclosure are amenable to various modifications and alternative forms, specifics thereof have been shown by way of example in the drawings and will be described in detail. It should be understood, however, that the intention is not to limit the disclosure to the particular embodiments described. On the contrary, the intention is to cover all modifications, equivalents, and alternatives falling within the spirit and scope of the disclosure.

#### DETAILED DESCRIPTION

FIG. 1, depicts a firearm aiming device **100** according to one or more embodiments of the disclosure. The firearm aiming device **100** is an optical firearm scope or rifle scope, and, for the sake of brevity, is referred to herein as a “scope” **100**. It should be understood that scope **100** is not limited to being an optical scope for a rifle, but, in various embodiments, can include other various forms of firearm aiming devices. In certain embodiments, scope **100** is attachable to, and/or useable with various types of firearms, such as rifles, shotguns, handguns, bows or other types of firearms or weapons.

In one or more embodiments, scope **100** includes a turret assembly **102**, scope body **104**, ocular housing **106** carrying an ocular lens system, objective housing **108** carrying an objective lens system, and an erector assembly with reticle cell **109**. In some embodiments, scope **100** includes one or more turret assemblies in addition to turret assembly **102**. For example, in some embodiments, scope **100** additionally includes a second turret assembly. The second turret assem-

5

bly can be configured as a windage turret for making lateral aiming adjustments and positioned approximately at the dashed, circular line **110** depicted as in FIG. **1**, on either side of the scope body **104**.

In various embodiments, turret assembly **102** is rotatably mounted to scope body **104**. Depicted in FIG. **1**, turret assembly **102** is configured as an elevation turret for making vertical aiming adjustments by moving the erector assembly with reticle cell **109**, relative to scope body **102**. The composition and functioning of an erector assembly and lens systems of a scope are well known in the art, and will not be described in detail herein. However, such details can be found, for example, in U.S. Pat. No. 9,297,615, entitled "Multiple-Zero-Point Riflescope Turret System", issued Mar. 29, 2016, which is herein incorporated by reference in its entirety.

In one or more embodiments, turret assembly **102** includes an interior mechanical portion **111** which is enclosed within an exterior turret cover **200** and at least partially positioned within scope body **104**. The interior mechanical portion **111** is a portion of the turret assembly **102** that includes one or more of the various functional mechanisms in the turret assembly **102** configured to provide aiming adjustments within the scope **100**. In one or more embodiments, the turret cover **200** is an exterior sheath or cover configured to be manipulated by a shooter to control the functional mechanisms in the interior mechanical portion. For example, in certain embodiments, a user can grab and rotate the turret cover **200** about an axis **114** to engage the interior mechanical portion **201** with the erector assembly with reticle cell **109** control the position of the erector assembly within the scope **100**, thereby making vertical aiming adjustments.

FIG. **2** depicts a self-illuminated turret cover **200** for a turret assembly, according to one or more embodiments of the disclosure. As described above, turret cover **200** is a cap or top cover for a turret assembly, such as turret assembly **102** (FIG. **1**). In some embodiments, turret cover **200** has a generally cylindrical shape defined by an upper portion **204** and a lower portion **208**. Depicted in FIG. **2**, the upper portion **204** and lower portion **208** are assembled together to form a single, generally cylindrical piece that can be secured to and enclose an interior mechanical portion of a turret assembly, described above with reference to FIG. **1**.

In various embodiments, upper portion **204** is a portion of the turret cover **200** configured to be grasped by a user for controlling aiming adjustments. As such, in certain embodiments, upper portion **204** includes a turret housing **212** having a sidewall **220** defining a generally cylindrical shape that extends from a lower end **224** to a top surface **228**. In some embodiments, the sidewall **220** defines a diameter for the upper portion **204** that is generally larger than the lower portion **208**, and, in some embodiments, defines a plurality of gripping recesses **216** which are positioned circumferentially about the turret housing **212**.

In one or more embodiments, lower portion **208** is a portion of the turret cover **200** configured to provide an indication to a user of the amount of aiming adjustment that has been made using a turret assembly. As such, in one or more embodiments, lower portion **208** includes various adjustment marks **232** of lines and/or numbers which are positioned circumferentially about the lower portion **208**. These adjustment marks **232** can be aligned with a reference mark, such as a zero mark, on a scope body to assist a shooter in determining a relative rotational position for the turret cover **200** about central axis **236**. This rotational

6

position can indicate a specific aiming adjustment to the shooter for zeroing in or for other aiming adjustments of the scope.

In one or more embodiments, the turret cover **200** is configured for self-illumination of the adjustment marks **232**. As such, and described further below, in various embodiments, the upper portion **204** includes an illumination assembly, having a plurality of lighting elements, housed within the turret housing **212** configured to illuminate the various adjustment marks **232** of the lower portion **208**. In certain embodiments, the turret housing **212** includes an external switch **240** configured to interact with the illumination assembly to control the lighting elements therein. Described further below, in operation, the illumination assembly can illuminate the adjustment marks **232** via an edge-lighting process.

FIGS. **3A** and **3B** depict partially exploded views of the turret cover **200**, according to one or more embodiments of the disclosure. FIG. **3A** depicts an exploded view of the turret cover **200** with the upper portion **204** and lower portion **208** separated from one another along a central axis **236**. In various embodiments, the lower portion **208** includes an exterior sleeve portion **304** surrounding an interior backing portion **308** inserted within the exterior sleeve portion **304**. FIG. **3B** depicts a further exploded view of the turret cover **200**, with the exterior sleeve portion **304** and the interior backing portion **308** separated from one another along the central axis **236**.

In one or more embodiments, the exterior sleeve portion **304** has a generally cylindrical shape defined by a sidewall **312** that extends from a lower end **316** to an upper end **320**. In one or more embodiments, the exterior sleeve portion **304** includes a flange portion **324** at the upper end **320** that extends inwardly towards the central axis **236**. The upper end **320** and lower end **316** of sidewall **312** define respective openings **328** and **332**.

In various embodiments, the interior backing portion **308** has a cylindrical shape defined by a sidewall **336** that extends from a lower end **340** to an upper end **344** and top surface **348**. In various embodiments, the top surface **348** defines a central aperture **352** and a plurality of fastener apertures **356**. In certain embodiments, the interior backing portion **308** includes a circumferential lip **360** defined by a circumferential recess that extends inwardly toward the central axis **236**.

In one or more embodiments, the central aperture **352** includes a splined surface **364** including a plurality of splines. Splines extend axially along their lengths, and project radially toward the central axis **236** along their respective heights. In various embodiments, splines include projections, teeth, or other projecting structures which function to engage with complementary structure. For example, a plurality of recesses are defined between pairs of adjacent splines and are configured to receive complementary splines or projections of a splined portion of an interior mechanical portion of a turret assembly, such as a turret screw.

In various embodiments, fastener apertures **356** are sized to receive screws, plugs, or other suitable fasteners for securing the turret cover **200** to a turret assembly. In some embodiments, fastener apertures **356** are used to secure the lower portion **208** and upper portion **204** of the turret cover **200** together.

As depicted in FIGS. **3A** and **3B**, the exterior sleeve portion **304** and interior backing portion **308** are sized such that the interior backing portion **308** is upwardly insertable into the exterior sleeve portion **304** via opening **328**. As such, in certain embodiments, and when assembled, the



lower portion **208** includes an upwardly facing annular edge **368** that is defined by the exterior sleeve portion **304** and surrounds the interior backing portion **308**. In various embodiments, flange portion **324** of the exterior sleeve portion **304** and the circumferential lip **360** fit together to limit upward insertion of the interior backing portion **308**.

In various embodiments, the exterior sleeve portion **304** is constructed from an at least partially transparent plastic, such as acrylic, polycarbonate, or other plastic suitable for edge lighting. Additionally, in one or more embodiments, the adjustment marks **232** are etched into the plastic material of the exterior sleeve portion **304** so that they are externally visible to a user and so that the adjustment marks **232** illuminate in response to edge lighting the exterior sleeve portion **304**. For example, in certain embodiments, the adjustment marks **232** are illuminated by light which is received via the upwardly facing annular edge **368** and which is transmitted through the material of the external sleeve portion **304** and reflects off of etched portions, thereby illuminating adjustment marks **232**. Additionally, in certain embodiments, the adjustment marks **232** are painted, for example using tritium paint, or other suitable paint, to improve the visibility of the etched adjustment marks **232**.

In various embodiments, the interior backing portion **308** is constructed from metal, plastic, or other suitable material. In various embodiments, interior backing portion **308** is constructed from a substantially non-transparent material to form a visual backing for the lower portion **208** and to improve the visibility of the alignment marks **232** by increasing contrast between the alignment marks **232** and the surface of the interior backing portion **308**. In some embodiments, the exterior sleeve portion **304** itself forms the visual backing. For example, in some embodiments an interior surface **372** is painted such that it is substantially non-transparent.

FIG. 4 depicts a further exploded view of upper portion **204** and turret housing **212** along central axis **236**. In one or more embodiments, the upper portion **204** further includes an illumination assembly **404** and a battery assembly **408**.

In certain embodiments, battery assembly **408** includes a battery cover **412**, a battery **416**, a battery housing portion **420**, a mounting ring **424**, and a battery contact portion **428**. In various embodiments, the battery housing portion **420** is a portion of the battery assembly **408** configured to house the battery **416**. As such, battery housing portion **420** includes a sidewall **432** defining a central recess for containing battery **416** and having an interior threaded portion **436** configured to attach with the battery cover **412** to enclose the battery **416** in the central recess. In various embodiments, battery housing portion **420** is sized to fit inside mounting ring **424**, which is configured as a spacer that fills a battery recess **448** defined in the turret housing **212** to create a suitable fit for the battery assembly **408** in turret housing **212**.

In various embodiments, when assembled, the battery contact portion **428** is first lowered into the battery recess **448** with the battery housing portion **420** and mounting ring **424** lowered onto the battery contact portion **428**. As a result, in one or more embodiments, the battery cover **412** and battery contact portion **428** form an electrical pathway through the battery assembly **408** from the battery **416** to electrical pathways or contacts **440** and **444** which, in an embodiment, extend laterally from the battery contact portion **428** to supply power to the illumination assembly **404**, described further below. Although the term “contacts” **440** and **444** are used herein, it will be understood that “contacts”

refers to any electrically conductive pathway, including wires, printed-circuit board traces, electrical terminals, and so on.

In one or more embodiments, the illumination assembly **404** includes a circuit board **456** having various control, lighting, power distribution and conditioning components, and other electrical components. Circuit board **456** may comprise a printed circuit board, having an upwardly facing surface **460** and a downwardly facing surface **464**. Described further, with reference to FIGS. **5A** and **5B**, the downwardly facing surface **464** includes a plurality of lighting elements electrically connected together and to a switch **468** mounted on the upwardly facing surface **460**. In various embodiments, the switch **468** is configured to control the light output of the various lighting elements of the illumination assembly. In certain embodiments, when assembled, switch **468** is configured to interact with external switch **240** of the turret housing **212** for controlling or toggling of the lighting elements and for controlling or toggling the turret cover between various self-illumination settings.

In an embodiment, the electrical components of circuit board **456** may include a processor or controller, and in some embodiments, a memory device, for controlling the lighting elements. Control of the lighting elements may include on/off control, color selection, time-delayed shut-off (turning off the lighting elements after a predetermined time), and other control functions. Although the electrical components are described as being part of, or connected to, circuit board **456**, some components may be located or housed in alternative portions of the lighted turret cover.

Additionally, in certain embodiments, circuit board **456** includes fastener apertures **465**. In various embodiments, fastener apertures **465** are aligned with fastener apertures **356** of the lower portion **208**. Fastener apertures **465** are sized to receive screws, plugs, or other suitable fasteners for securing the illumination assembly **404** to the turret housing **212**. In some embodiments, fastener apertures **356** are used with fastener apertures **356** to secure the turret cover to an interior mechanical portion of a turret assembly.

FIGS. **5A** and **5B** depict perspective views of the battery assembly **408** and illumination assembly **404**, according to one or more embodiments of the disclosure. Described above with reference to FIG. **4**, in various embodiments, the battery assembly **408** includes a battery cover **412**, and battery contact portion **428**. Depicted in FIGS. **5A** and **5B**, the battery assembly **408** is assembled, forming an electrical pathway from an enclosed battery to the illumination assembly **404** via electrical contacts **440** and **444**. A plurality of lighting elements **504** are disposed on the downwardly facing surface **464** of the circuit board **456**. In one or more embodiments, each of the lighting elements **504** comprise light-emitting diodes (LEDs). In an embodiment each lighting element **504** comprises a single LED transmitting light in the visible spectrum having a single color, such as substantially white light, yellow light, red light, blue light, and so on. In another embodiment, each lighting element **504** comprises multiple LEDs, each LED emitting a particular color, and each being separately controlled. For example, a lighting element **504** includes a plurality of selectable LEDs, including a first LED transmitting a first-color light, a second LED transmitting a second-color light, and a third LED transmitting a third-color light. In one such embodiment, the first, second and third LEDs include a white-light LED, a yellow-light LED, and a red-light LED. It will be understood, however, that the number of LEDs may be more or fewer. Additionally, although the lighting

elements may comprise LEDs, it is contemplated that any suitable light source may be used in the illumination assembly **404**.

In addition, while FIGS. **5A** and **5B** depict a plurality of lighting elements, in certain embodiments the illumination assembly **404** could include a single lighting element, or only a few lighting elements **504**. For example, in some embodiments, the illumination assembly **404** could include a single lighting element having a light output sufficient for edge lighting or illuminating optical fibers in the turret cover, described further below. Further, in some embodiments the illumination assembly **404** could include a single ring shaped light element that replaces the ring of lighting elements **504** arranged on the downwardly facing surface **464** of the circuit board **456**.

In various embodiments, the plurality of lighting elements **504** are arranged at or near the outer edge of the circuit board to form a circumferential ring. As such, and described further below, lighting elements are configured to illuminate the exterior sleeve portion via an edge-lighting process. For example, in various embodiments, the lighting elements **504** are positioned over the upwardly facing annular edge of the exterior sleeve portion and configured to transmit light through that edge and through the exterior sleeve portion thereby illuminating etched portions in the exterior sleeve portion.

In an embodiment, the number of lighting elements **504** corresponds to the number of adjustment marks **232** on the turret cover. In one such embodiment, a lighting element **504** is positioned above, and aligned vertically with a single adjustment mark **232**.

FIGS. **6A** and **6B** depict cross section views of a turret cover **200**, according to one or more embodiments of the disclosure. As described above, in one or more embodiments, turret cover **200** includes an upper portion **204** including a turret housing **212** having a sidewall **220** extending from a lower end **224** to a top surface **228**. In various embodiments, the lower end **224** of the sidewall **220** defines a first opening **612** in the turret housing **212** to a downwardly facing interior surface **604**. In one or more embodiments, the downwardly facing interior surface **604** and a first interior surface **608** of the sidewall **220** define an illumination recess **614** in the turret housing **212**. Illumination assembly **404** is mounted to the turret housing **212** in the illumination recess **614**. As described above, illumination assembly **404** includes a circuit board **456** having an upwardly facing surface **460** mounted to downwardly facing interior surface **604** of the turret housing **212**. Additionally, illumination assembly **404** includes a downwardly facing surface **464** including a plurality of lighting elements **504**. Switch **468** and exterior switch **240** are aligned and configured to selectively control the output of lighting elements **504**.

In one or more embodiments, the top surface **228** of the turret housing **212** defines a second opening **452** to an upwardly facing interior surface **616** defining a battery recess **448**. Depicted in FIG. **6A**, a battery assembly **408** is mounted in the battery recess **448**. Illumination assembly **404** and battery assembly **408** are electrically connected via electrical contacts **440** and **444** to supply power to lighting elements **504**.

As described above, the lower portion **208** includes an exterior sleeve portion **304** of an at least partially transparent plastic material surrounding an interior backing portion **308**. Depicted in FIG. **6B**, in assembly, the lower portion **208** is at least partially inserted into the illumination recess **614** and fastened to the upper portion **204** such that an upwardly facing annular edge **368** of the exterior sleeve portion **304** is

positioned adjacent to the plurality of lighting elements **504** of the illumination assembly **404**. Consequently, in operation, the lighting elements **504** of the illumination assembly are powered on by the battery assembly **408** and illuminate, via an edge lighting process, a plurality of etched adjustment marks in the exterior sleeve portion. Light is transmitted from the lighting elements into sleeve portion **304** at edge **368** through the light-transmissive medium that is exterior sleeve portion **304** to etched adjustment marks **232** causing them to be lighted.

FIG. **7** depicts another embodiment of a self-illuminated turret cover, self-illuminated turret cover **700**, for a turret assembly, according to one or more embodiments of the disclosure. In various embodiments, turret cover **700** is the same or substantially similar to turret cover **200**, described above with reference to FIG. **2**. For example, turret cover **700** is a cap or top cover for a turret assembly and has a generally cylindrical shape defined by an upper portion **204** and a lower portion **208**.

In one or more embodiments, the turret cover **700** is configured for self-illumination of adjustment marks **232**. As described above, in various embodiments, the upper portion **204** includes a turret housing **704** that includes an illumination assembly and a plurality of lighting elements configured to illuminate the various adjustment marks **232** of the lower portion **208**.

In certain embodiments, the turret housing **704** includes a plurality of solar panels **708** mounted on a top surface **712**. In various embodiments, the plurality of solar panels **708** are configured to generate electrical charge for powering the illumination assembly, and for illuminating adjustment marks **232**. In various embodiments, solar panels **708** are electrically connected with a rechargeable battery mounted within a battery assembly **716** in the turret housing **704**. As such, and when exposed to sufficient light conditions, solar panels **708** charge the battery to extend battery life and illumination function for the turret cover **700**. While solar panels **708** are depicted in FIG. **7** in the top surface **712** of the turret housing **704**

FIG. **8**, depicts a firearm aiming device **800** according to one or more embodiments of the disclosure. The firearm aiming device **800** is an optical firearm scope or rifle scope, and, is the same or substantially similar to the firearm aiming device **100** in FIG. **1**. For example, scope **800** includes a turret assembly **802**, scope body **104**, ocular housing **106** carrying an ocular lens system, and objective housing **108** carrying an objective lens system.

In one or more embodiments, turret assembly **802** includes a turret cover **804**. Turret cover **804** is an exterior sheath or cover configured to be manipulated by a shooter to control the functional mechanisms in the interior mechanical portion. As described above, in various embodiments, turret cover **804** is configured for self-illumination of adjustment marks on the turret cover **804** for elevation or other aiming adjustments in low light conditions. As such, in one or more embodiments, the scope body **104** includes a battery assembly **804** mounted internally and electrically connected to the turret cover **802**. For example, in some embodiments, battery assembly **804** is mounted opposite the elevation turret, in the eyepiece, or in other location for easy access by a shooter.

FIG. **9** depicts a cross-section view of a turret cover **900**, according to one or more embodiments of the disclosure that utilizes fiber optics for providing lighted indicia. In various embodiments turret cover **900** includes the same or substantially similar components as turret cover **200**, described

11

above with reference to FIGS. 2, 6A, and 6B. Like elements are referred to with like reference numerals.

As such, in one or more embodiments, turret cover 900 includes an upper portion 204 including a turret housing 212 having a sidewall 220 extending from a lower end 224 to a top surface 228. In various embodiments, the lower end 224 of the sidewall 220 defines an opening or recess for positioning an illumination assembly 404 internally within the turret cover 900. As described above, illumination assembly 404 includes a circuit board 456 having an upwardly facing surface 460 mounted to downwardly facing interior surface 604 of the turret housing 212. Additionally, illumination assembly 404 includes a downwardly facing surface 464 including a plurality of lighting elements 504. Switch 468 and exterior switch 240 are aligned and configured to control the output of lighting elements 504.

In one or more embodiments, the top surface 228 of the turret housing 212 defines a second opening 452 to an upwardly facing interior surface 616 defining a battery recess 448. Depicted in FIG. 9, a battery assembly 408 is mounted in the battery recess 448. Illumination assembly 404 and battery assembly 408 are electrically connected via electrical contacts 440 and 444 to supply power to lighting elements 504.

In various embodiments, turret cover 900 includes a lower portion 904 including an exterior sleeve portion 908 surrounding an interior backing portion 308. In one or more embodiments, the exterior sleeve portion 908 is substantially similar to exterior sleeve portion 304, having a generally cylindrical shape defined by a sidewall 912 and a flange portion 324 that extends inwardly towards the central axis 236.

In addition, in various embodiments, the exterior sleeve portion 908 is constructed from an at least partially transparent material such as acrylic, polycarbonate, other suitable plastic, glass, or other suitable transparent material. In other embodiments sleeve portion 908 may not comprise a partially transparent material.

Additionally, in one or more embodiments, the exterior sleeve portion 908 includes a plurality of recesses 916 in sidewall 912. In various embodiments each of the recesses 916 are vertically oriented, extending along a portion of the height of the sidewall 912 from a bottom portion 920 to a mid-portion 924 located below the lower end 224 of the top portion 204.

In various embodiments each of the recesses 916 are positioned circumferentially about the exterior sleeve portion 908 and aligned with each of a plurality of optical fibers 928 that are included within the exterior sleeve portion 908. As such, in various embodiments the recesses 916 expose or otherwise make visible the optical fibers 928 from the exterior of the turret cover 900 between the bottom portion 920 and mid-portion 924.

As used herein, optical fibers refer to relatively thin fibers or strands of transparent or at least partially transparent material through which light can be transmitted. In certain embodiments, the optical fibers 928 include a transparent core portion that is surrounded by a cladding material having a lower index of refraction than the core portion. As such, the cladding material causes the fibers 928 to act as a waveguide, transmitting light from end to end of each of the fibers 928. In addition, described further below, in certain embodiments the cladding material is removed from some portion of the optical fibers 928 to achieve a glowing or illuminating effect from light traveling therethrough.

In various embodiments each of the optical fibers 928 are positioned within or inlaid within the interior of the exterior

12

sleeve portion 908 and are vertically oriented, extending along the height of the exterior sleeve portion 908. As such, in various embodiments the optical fibers 928 extend from the bottom portion 920 to a top portion 930 flush with an upwardly facing annular edge 368 of the exterior sleeve portion 908.

In one or more embodiments the optical fibers 928 are arranged circumferentially about the exterior sleeve portion to correspond to one or more of the adjustment marks 232, as depicted for example in FIG. 2. As such, in various embodiments the optical fibers 928 act as the adjustment marks 232, externally visible to a user via the recesses 916 through the sidewall 912 of the exterior sleeve portion 908.

Depicted in FIG. 9, in assembly, the lower portion 904 is at least partially inserted into the recess defined by the upper portion 204 and fastened to the upper portion 204 such that an upwardly facing annular edge 368 of the exterior sleeve portion 304 is positioned adjacent to the plurality of lighting elements 504 of the illumination assembly 404. Consequently, in operation, the lighting elements 504 of the illumination assembly are powered on by the battery assembly 408 and illuminate, via the optical fibers 928, the plurality of adjustment marks for the turret cover 900. For example, in certain embodiments, the adjustment marks 232 are illuminated by light which is received via the top portion 930 of the optical fibers 928 and which is transmitted through the material of the optical fibers 928. In various embodiments, transparent cladding of the optical fibers 928 is removed from the optical fiber 928 where the fibers are exposed. As such, each of the optical fibers 928 are configured to defined illuminated or glowing adjustment marks 232. Additionally, in certain embodiments, the optical fibers 928 can be painted, for example using tritium paint, or other suitable paint, to improve the visibility of the etched adjustment marks 232.

The descriptions of the various embodiments of the present disclosure have been presented for purposes of illustration, but are not intended to be exhaustive or limited to the embodiments disclosed. Many modifications and variations will be apparent to those of ordinary skill in the art without departing from the scope and spirit of the described embodiments. The terminology used herein was chosen to explain the principles of the embodiments, the practical application or technical improvement over technologies found in the marketplace, or to enable others of ordinary skill in the art to understand the embodiments disclosed herein.

What is claimed is:

1. A turret cover for a turret assembly on a firearm aiming device, the turret cover comprising:
  - an upper portion including a turret housing defining a battery recess and an illumination recess;
  - a battery assembly mounted in the battery recess;
  - an illumination assembly mounted in the illumination recess and electrically connected to the battery assembly, the illumination assembly including a lighting element; and
  - a lower portion including an exterior sleeve portion of an at least partially transparent plastic material, the exterior sleeve portion including a plurality of adjustment marks etched into the at least partially transparent material, the lower portion at least partially inserted into the illumination recess such that an upwardly facing edge of the exterior sleeve portion is positioned adjacent to the lighting element of the illumination assembly;

## 13

wherein, in operation, the lighting element of the illumination assembly is powered on by the battery assembly and illuminates, via an edge-lighting process, the plurality of etched adjustment marks.

2. The turret cover of claim 1, wherein the turret housing has a sidewall extending from a lower end to a top surface, the lower end of the sidewall defining a first opening in the turret housing to a downwardly facing interior surface, the downwardly facing interior surface and a first interior surface of the sidewall defining the illumination recess.

3. The turret cover of claim 2, wherein the top surface of the turret housing defines a second opening in the turret housing to an upwardly facing interior surface, the upwardly facing interior surface and a second interior surface of the sidewall defining the battery recess.

4. The turret cover of claim 2, wherein the illumination assembly includes a circuit board having an upwardly facing surface positioned adjacent to the downwardly facing interior surface and the circuit board having a downwardly facing surface including the lighting element.

5. The turret cover of claim 1, wherein the exterior sleeve portion has a sidewall extending from a lower end to an upper end, the sidewall defining a first opening at the upper end and a second opening at the lower end, the upper end of the sidewall including an inwardly extending flange portion at the upper end.

6. The turret cover of claim 5, wherein the lower portion is at least partially inserted into the illumination recess and fastened to the upper portion such that an upwardly facing edge at the upper end of the exterior sleeve portion is positioned adjacent to the lighting element of the illumination assembly.

7. The turret cover of claim 5, wherein the exterior sleeve portion surrounds an interior backing portion having a sidewall that extends from a lower end to an upper end, the interior backing portion including a circumferential lip, at the upper end, defined by an inwardly extending circumferential recess in the sidewall, the interior backing portion upwardly insertable into the exterior sleeve portion via the second opening such that the flange portion of the exterior sleeve portion and the circumferential lip fit together to limit upward insertion of the interior backing portion.

8. The turret cover of claim 7, wherein the interior backing portion is constructed from a non-transparent material.

9. The turret cover of claim 1, wherein: the exterior sleeve portion has a painted interior surface such that the interior surface is substantially non-transparent.

10. The turret cover of claim 1, wherein: the illumination assembly further includes a switch configured to control output of the lighting element; and the turret housing includes a push button configured to interact with the switch in the illumination recess.

11. The turret cover of claim 10, wherein: the switch is configured to toggle the output of the lighting element between at least three different outputs.

12. The turret cover of claim 1, wherein the exterior sleeve portion is constructed from at least one of acrylic and polycarbonate.

13. The turret cover of claim 1, wherein the plurality of adjustment marks are painted using a reflective material paint.

14. A firearm aiming device comprising: a scope body including an interior erector assembly and reticle cell;

## 14

a turret assembly mounted on the scope body, the turret assembly including an interior mechanical portion configured to engage the erector assembly within the scope body for aiming adjustments, the turret assembly further including a turret cover enclosing the interior mechanical portion, the turret cover including:

an upper portion including a turret housing defining a battery recess and an illumination recess;

a battery assembly mounted in the battery recess;

an illumination assembly mounted in the illumination recess and electrically connected to the battery assembly, the illumination assembly including a lighting element; and

a lower portion including an exterior sleeve portion of an at least partially transparent plastic material, the exterior sleeve portion including a plurality of adjustment marks etched into the at least partially transparent material, the lower portion at least partially inserted into the illumination recess such that an upwardly facing edge of the exterior sleeve portion is positioned adjacent to the lighting element of the illumination assembly;

wherein, in operation, the lighting element of the illumination assembly is powered on by the battery assembly and illuminates, via an edge lighting process, the plurality of etched adjustment marks.

15. The firearm aiming device of claim 14, wherein the turret housing has a sidewall extending from a lower end to a top surface, the lower end of the sidewall defining a first opening in the turret housing to a downwardly facing interior surface, the downwardly facing interior surface and a first interior surface of the sidewall defining the illumination recess.

16. The firearm aiming device of claim 15, wherein the illumination assembly includes a circuit board having an upwardly facing surface positioned adjacent to the downwardly facing interior surface and the circuit board having a downwardly facing surface including the lighting element.

17. The firearm aiming device of claim 14, wherein the exterior sleeve portion has a sidewall extending from a lower end to an upper end, the sidewall defining a first opening at the upper end and a second opening at the lower end, the upper end of the sidewall including an inwardly extending flange portion at the upper end; and

the lower portion is at least partially inserted into the illumination recess and fastened to the upper portion such that an upwardly facing edge at the upper end of the exterior sleeve portion is positioned adjacent to the lighting element of the illumination assembly.

18. The firearm aiming device of claim 17, wherein the exterior sleeve portion surrounds an interior backing portion having a sidewall that extends from a lower end to an upper end, the interior backing portion including a circumferential lip, at the upper end, defined by an inwardly extending circumferential recess in the sidewall, the interior backing portion upwardly insertable into the exterior sleeve portion via the second opening such that the flange portion of the exterior sleeve portion and the circumferential lip fit together to limit upward insertion of the interior backing portion.

19. A turret cover for a turret assembly on a firearm aiming device, the turret cover comprising:

an upper portion including a turret housing defining a battery recess and an illumination recess;

a battery assembly mounted in the battery recess;

an illumination assembly mounted in the illumination recess and electrically connected to the battery assembly, the illumination assembly including a lighting element; and

a lower portion including an exterior sleeve portion 5  
having a sidewall extending from a lower end to an upper end and defining a first opening at the upper end and a second opening at the lower end, the sidewall including a plurality of optical fibers, each of the plurality of optical fibers positioned at least partially 10  
within the sidewall extending between the upper end and lower end of the sidewall, each of the plurality of optical fibers having an exposed first end at an upwardly facing edge of the upper end of the sidewall, the sidewall including a plurality of adjustment marks 15  
spaced circumferentially about an exterior surface of the sidewall, the lower portion at least partially inserted into the illumination recess such that the upwardly facing edge is positioned adjacent to the lighting element of the illumination assembly; 20

wherein, in operation, the lighting element of the illumination assembly is powered on by the battery assembly and illuminates, via the plurality of optical fibers, the plurality of adjustment marks.

20. The turret cover of claim 19, wherein the sidewall 25  
includes a plurality of recesses in an exterior of the sidewall that expose a portion of each of the plurality of optical fibers, wherein the plurality of adjustment marks are defined by the portions of the plurality of optical fibers exposed by the plurality of recesses. 30

\* \* \* \* \*